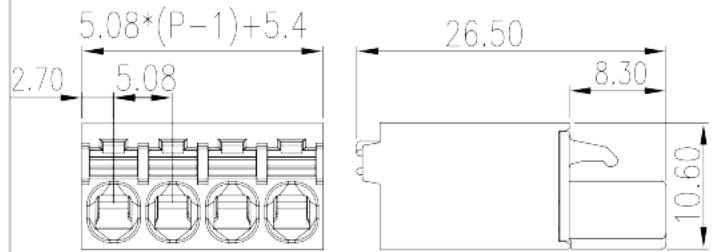


2ESS-XXP

PCB > PCB -

:2026-07-04 :1.1



Pitch : 5.08 mm, 300V, 15A

	PCB Connector – Plug, Push-in design
	PCB Connector – Plug
(mm)	5.08
	Black (default)
	Push in Design
	Without
(mm)	$5.08 * (P - 1) + 5.40$
(mm)	10.6
(mm)	26.5
()	02P~24P
	Single level
	PA
	I
UL 94	V0
	500M at DC 500V
	COPPER ALLOY

Tin PLATED

-IEC

(V)	630
(A)	18
(II/2)(V)	630
(III/2)(V)	320
(III/3)(V)	320
(II/2)(KV)	4
(III/2)(KV)	4
(III/3)(KV)	4
(mm ²)	0.2
(mm ²)	2.5
(mm ²)	0.2
(mm ²)	2.5
(mm ²) , ,	0.25
(mm ²) , ,	2.5
(mm ²) , ,	0.25
(mm ²) , ,	2.5
2 (mm ²) , ,	0.5
2 (mm ²) , ,	1
Philips	0.6x3.5
	10~11

-UL

(UL/CUL Group B)(V)	300
(UL/CUL Group B)(A)	15
(UL/CUL Group D)(V)	300
(UL/CUL Group D)(A)	10
UL/CUL AWG	24
UL/CUL AWG	12
UL/CUL AWG	24



UL/CUL	AWG	12
&		
가	(YES or NO)	YES
		120
		-40

UL

(Group B)(AWG)	24~12
(Group B)(V)	300
(Group B)(A)	15
(Group D)(AWG)	24~12
(Group D)(V)	300
(Group D)(A)	10

CUL

(Group B)(AWG)	24~12
(Group B)(V)	300
(Group B)(A)	15
(Group D)(AWG)	24~12
(Group D)(V)	300
(Group D)(A)	10

VDE

(mm ²)	0.2~2.5
(V)	630
(A)	18

--	--

