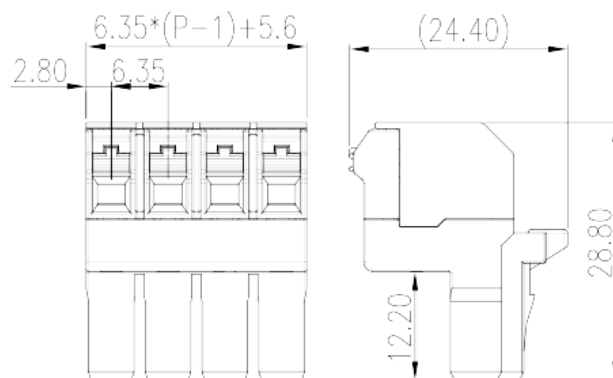
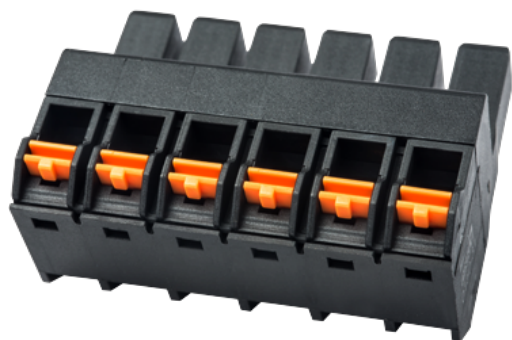


0150-31XX

PCB > PCB -

:2026-02-09



Pitch : 6.35 mm, 600V, 20A

	PCB Connector – Plug, Push-in Design
	PCB Connector – Plug
(mm)	6.35
	Black (default)
	Push in Design
	With lock flange
(mm)	$6.35 * (P-1) + 5.6$
(mm)	24.4
(mm)	28.8
()	02P~12P
	Single level
	PBT
	IIIa
UL 94	V0
	1000M at DC 500V
	COPPER ALLOY

Tin PLATED

-IEC

(V)	1000
(A)	20
(II/2)(V)	1000
(III/2)(V)	1000
(III/3)(V)	800
(II/2)(KV)	8
(III/2)(KV)	8
(III/3)(KV)	8
(mm ²)	0.2
(mm ²)	2.5
(mm ²)	0.2
(mm ²)	2.5
(mm ²) , ,	0.25
(mm ²) , ,	1.5
(mm ²) , ,	0.25
(mm ²) , ,	1.5
	11~12

-UL

(UL/CUL Group B)(V)	600
(UL/CUL Group B)(A)	20
(UL/CUL Group C)(V)	600
(UL/CUL Group C)(A)	20
(UL/CUL Group D)(V)	600
(UL/CUL Group D)(A)	5
UL/CUL AWG	24
UL/CUL AWG	12
UL/CUL AWG	24
UL/CUL AWG	12

&

가 (YES or NO)	YES
	120
	-40

UL

(Group B) (AWG)	24~12
(Group B) (V)	600
(Group B) (A)	20
(Group C) (AWG)	24~12
(Group C) (V)	600
(Group C) (A)	20
(Group D) (AWG)	24~12
(Group D) (V)	600
(Group D) (A)	5

CUL

(Group B) (AWG)	24~12
(Group B) (V)	600
(Group B) (A)	20
(Group C) (AWG)	24~12
(Group C) (V)	600
(Group C) (A)	20
(Group D) (AWG)	24~12
(Group D) (V)	600
(Group D) (A)	5

