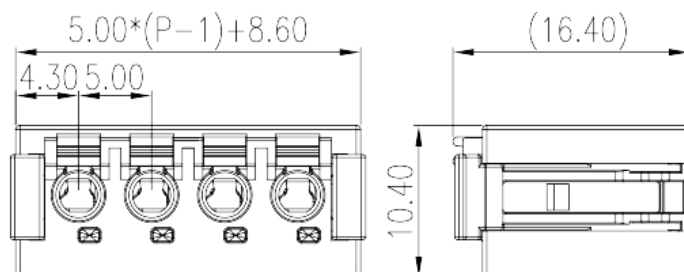
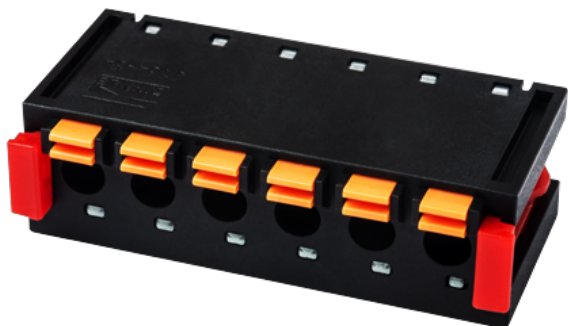


# 0184-34XX

PCB > PCB -

:2026-07-05



Pitch : 5.00 mm, 300V, 6A

	PCB Connector – Plug, Push-in Design
	PCB Connector – Plug
(mm)	5.00
	Black (default)
	Push in Design
	PCB Connection
(mm)	$5.00 * (P-1) + 8.6$
(mm)	10.4
(mm)	16.4
( )	02P~18P
	Single level
	PA
	I
UL 94	V0
	500M at DC 500V
	COPPER ALLOY

Tin PLATED

**-IEC**

(V)	320
(A)	7
(II/2)(V)	320
(III/2)(V)	320
(III/3)(V)	200
(II/2)(KV)	4
(III/2)(KV)	4
(III/3)(KV)	4
(mm <sup>2</sup> )	0.2
(mm <sup>2</sup> )	1.5
(mm <sup>2</sup> )	0.2
(mm <sup>2</sup> )	1.5
(mm <sup>2</sup> ) , ,	0.25
(mm <sup>2</sup> ) , ,	1
(mm <sup>2</sup> ) , ,	0.25
(mm <sup>2</sup> ) , ,	0.75
	8~9

**-UL**

(UL/CUL Group B)(V)	300
(UL/CUL Group B)(A)	6
(UL/CUL Group D)(V)	300
(UL/CUL Group D)(A)	6
UL/CUL AWG	24
UL/CUL AWG	16
UL/CUL AWG	24
UL/CUL AWG	16

**&**

가 (YES or NO)	YES
---------------	-----

	120
	-40

