

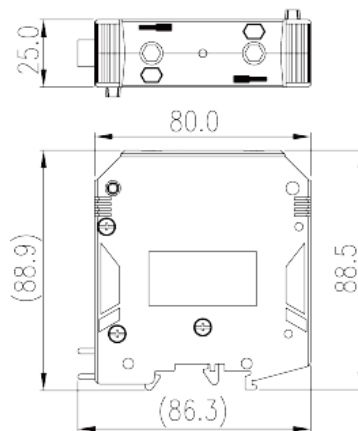
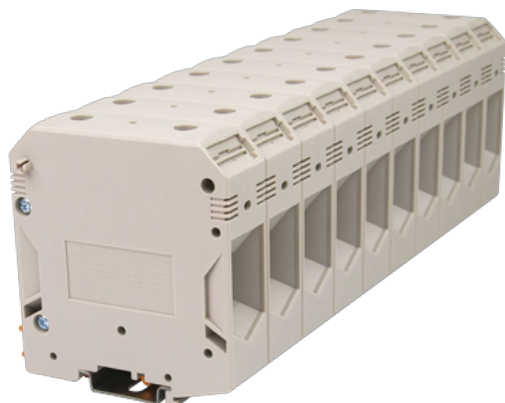
DK95

DIN

>

:2026-07-04

:1.2



M8, 600V, 230A, Beige (default)

	DIN rail terminal blocks, Feed through terminal blocks
	Feed through terminal blocks
	Beige (default)
	Screw connection
	Rail mounting
(mm)	80
(mm)	32.2
(mm)	88.5
()	1P
	Single level
	2
	PA
	I
UL 94	V0
	500M at DC 500V

-IEC

(V)		1000
(A)		232
(III/3)(V)		1000
(II/2)(KV)		8
(III/2)(KV)		8
(III/3)(KV)		8
(mm ²)		35
(mm ²)		95
(mm ²)		35
(mm ²)		95
(mm ²)	,	35
(mm ²)	,	70
(mm ²)	,	35
(mm ²)	,	70
2	(mm ²)	35
2	(mm ²)	35
2	(mm ²)	35
2	(mm ²)	35
(mm ²) 2	,	35
(mm ²) 2	,	35
2	(mm ²)	35
2	(mm ²)	35
		M8
Width)(mm)	(Blade thickness x	Hex socket 6
Philips		Hex socket 6
(N.m)		10.2
		30~35
		TS-35
		NO



		NO
-UL		
(UL/CUL Group B)(V)		600
(UL/CUL Group B)(A)		230str/100sol
(UL/CUL Group C)(V)		600
(UL/CUL Group C)(A)		230str/100sol
(UL/CUL Group D)(V)		600
(UL/CUL Group D)(A)		5
UL/CUL	AWG	4/0
UL/CUL	AWG	2
UL/CUL	AWG	4/0
UL/CUL	AWG	2

&

(YES or NO)		YES
가 (YES or NO)		NO
		120
		-40

UL

(Group B)(AWG)		2~4/0
(Group B)(V)		600
(Group B)(A)		230str/100sol
(Group C)(AWG)		2~4/0
(Group C)(V)		600
(Group C)(A)		230str/100sol
(Group D)(AWG)		2~4/0
(Group D)(V)		600
(Group D)(A)		5

CUL

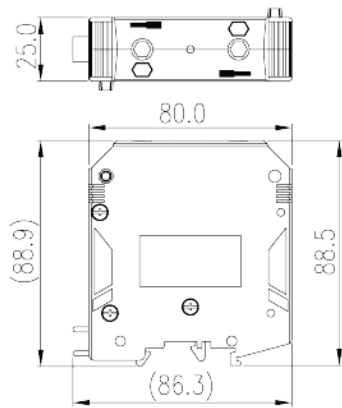
(Group B)(AWG)		2~4/0
(Group B)(V)		600
(Group B)(A)		230str/100sol

(Group C) (AWG)	2~4/0
(Group C) (V)	600
(Group C) (A)	230str/100sol
(Group D) (AWG)	2~4/0
(Group D) (V)	600
(Group D) (A)	5

VDE

(mm ²)	35~95
(V)	1000
(A)	232

(mm ²)	35~95
(V)	1000
(A)	232





Delight Through Connections