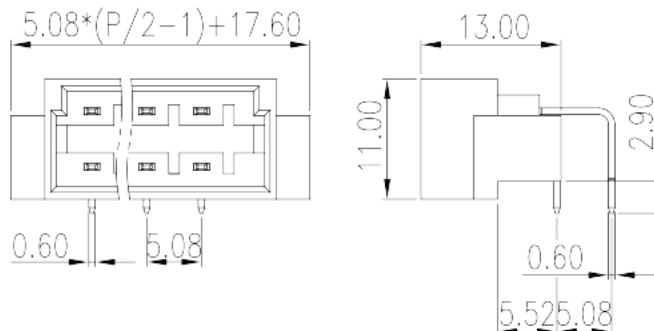
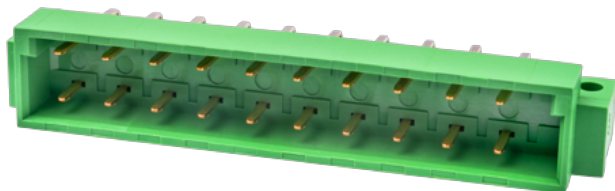


# FDCH508R-XXP

PCB > PCB -

:2026-07-04



Pitch: 5.08mm, 300V, 6A

	PCB Connector – Socket, Wave soldering
	PCB Connector – Socket
(mm)	5.08
	Green (default)
	With threaded flange
	Wave Soldering
(mm)	$5.08 \times (P/2 - 1) + 17.6$
(mm)	13
(mm)	11
( x ) (mm)	0.6x0.6
PCB (mm)	1
( )	20P~44P
	Double level
	PBT
	IIIa
UL 94	V0



	1000M at DC 500V
	COPPER ALLOY
	Tin PLATED

**-IEC**

(V)	320
(A)	6
(II/2)(V)	320
(III/2)(V)	320
(III/3)(V)	250
(II/2)(KV)	4
(III/2)(KV)	4
(III/3)(KV)	4
(N.m)	0.3

**-UL**

(UL/CUL Group B)(V)	300
(UL/CUL Group B)(A)	6
(UL/CUL Group D)(V)	300
(UL/CUL Group D)(A)	6

**&**

가 (YES or NO)	NO
	120
	-40