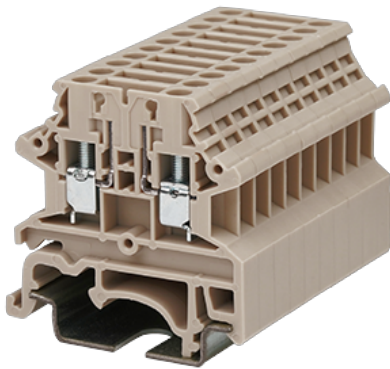


DK2.5N-T

DIN >

:2026-02-09



M2.5, 300V, 20A, Beige (default)

	DIN rail terminal blocks, Basic Disconnect Terminal Blocks
	Basic Disconnect Terminal Blocks
	Beige (default)
	Screw Connection
(mm)	40.7
(mm)	5.1
(mm)	40.9
()	1P
	Single level
	2
	PA
	I
UL 94	V0
	500M at DC 500V

-IEC

(V)	400
(A)	24
(III/3)(V)	400
(III/3)(KV)	6
(mm ²)	0.34
(mm ²)	2.5
(mm ²)	0.34
(mm ²)	2.5
(mm ²) , ,	0.34
(mm ²) , ,	2.5
(N.m)	0.4
	9~11

-UL

(UL/CUL Group B)(V)	300
(UL/CUL Group B)(A)	20
(UL/CUL Group C)(V)	300
(UL/CUL Group C)(A)	20
(UL/CUL Group D)(V)	300
(UL/CUL Group D)(A)	5
UL/CUL AWG	22
UL/CUL AWG	12
UL/CUL AWG	22
UL/CUL AWG	12

&

(YES or NO)	YES
가 (YES or NO)	YES
	120
	-40

--	--

