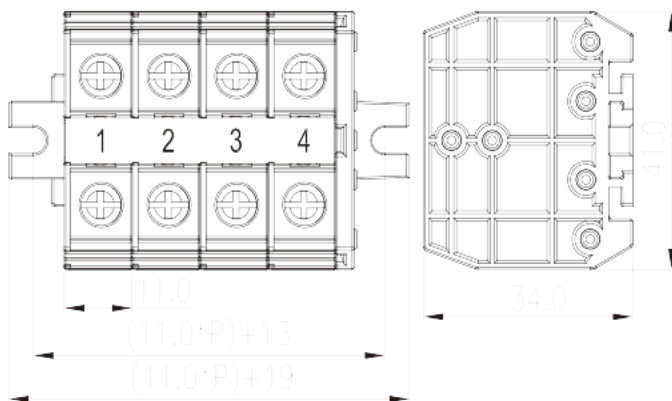
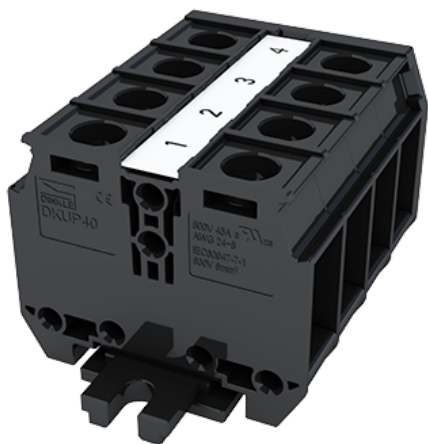


DKUP40-XXPK

NEMA

>

:2026-07-05



M4, 600V, 45/60A

	Panel Mounting, Screw Connection
	Panel Mounting
(mm)	11
	Refer to drawing
	Screw Connection
	Panel Mounting
(mm)	11.00*P+21
(mm)	41
(mm)	34
	01P~16P
()	01P~16P
	2~32
	PC
	a
UL 94	V2
	1000M at DC 500V



	COPPER ALLOY
	Tin PLATED
-IEC	
(V)	800
(A)	41
(III/3)(V)	800
(III/3)(KV)	8
(mm ²)	0.2
(mm ²)	6
(mm ²)	0.2
(mm ²)	6
	M4
Philips	PH2
(N.m)	1.2~2
(N.m)	1.2
(N.m)	2
	The stripping length depends on the specification provided by the cablelug manufacturer.
	TS-35N、TS-35/15N
	YES
	NO
-UL	
(UL/CUL Group B)(V)	600
(UL/CUL Group B)(A)	45
(UL/CUL Group C)(V)	600
(UL/CUL Group C)(A)	45
(UL/CUL Group D)(V)	600
(UL/CUL Group D)(A)	45
UL/CUL AWG	24
UL/CUL AWG	8
UL/CUL AWG	24
UL/CUL AWG	8

&



(YES or NO)	YES
가 (YES or NO)	NO
	125
	-40

UL

(Group B)(AWG)	24-8/(2)24-(2)10
(Group B)(V)	600
(Group B)(A)	45/60
(Group C)(AWG)	24-8/(2)24-(2)10
(Group C)(V)	600
(Group C)(A)	45/60
(Group D)(AWG)	24-8/(2)24-(2)10
(Group D)(V)	600
(Group D)(A)	5

CUL

(Group B)(AWG)	24-8/(2)24-(2)10
(Group B)(V)	600
(Group B)(A)	45/60
(Group C)(AWG)	24-8/(2)24-(2)10
(Group C)(V)	600
(Group C)(A)	45/60
(Group D)(AWG)	24-8/(2)24-(2)10
(Group D)(V)	600
(Group D)(A)	5

VDE

(mm ²)	0.2~6
(V)	800
(A)	41

--	--

