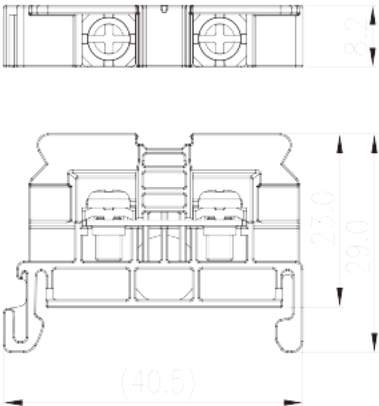
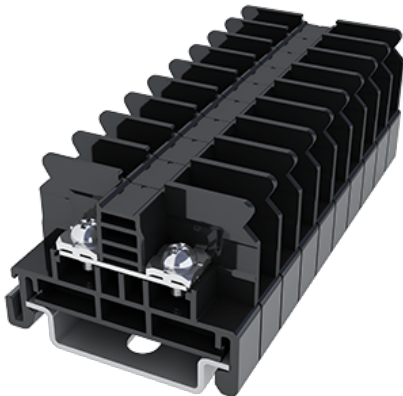


DKB20N

NEMA

>

:2026-02-09



M3.5, 600V, 20/30A

	DIN Rail terminal blocks, Screw connection
	Rail mounting terminal blocks
	Black (default)
	Screw connection
	Rail mounting
(mm)	40.5
(mm)	8.2
(mm)	29
	Single level
	2
	PC
	IIIa
UL 94	V2
	1000M at DC 500V
	Copper Alloy
	Tin PLATED

-IEC

(V)	630
(A)	24
(III/3)(V)	630
(II/2)(KV)	8
(III/2)(KV)	8
(III/3)(KV)	8
(mm ²)	0.2
(mm ²)	2.5
(mm ²)	0.2
(mm ²)	2.5
2 (mm ²)	2.5
2 (mm ²)	2.5
	M3.5
Philips	PH2
(N.m)	0.8~1
(N.m)	0.8
(N.m)	1
	9~10 The stripping length depends on the specification provided by the cable lug manufacturer.
	TS-35N、TS-35/15N
	YES
	NO

-UL

(UL/CUL Group B)(V)	600
(UL/CUL Group B)(A)	20
(UL/CUL Group C)(V)	600
(UL/CUL Group C)(A)	20
(UL/CUL Group D)(V)	600
(UL/CUL Group D)(A)	20
UL/CUL AWG	26
UL/CUL AWG	12
UL/CUL AWG	26
UL/CUL AWG	12

&

(YES or NO)	YES
가 (YES or NO)	NO
	125
	-40

UL

(Group B) (AWG)	26-12/(2)26-(2)14
(Group B) (V)	600
(Group B) (A)	20/30
(Group C) (AWG)	26-12/(2)26-(2)14
(Group C) (V)	600
(Group C) (A)	20/30
(Group D) (AWG)	26-12/(2)26-(2)14
(Group D) (V)	600
(Group D) (A)	5

CUL

(Group B) (AWG)	26-12/(2)26-(2)14
(Group B) (V)	600
(Group B) (A)	20/30
(Group C) (AWG)	26-12/(2)26-(2)14
(Group C) (V)	600
(Group C) (A)	20/30
(Group D) (AWG)	26-12/(2)26-(2)14
(Group D) (V)	600
(Group D) (A)	5

--	--

