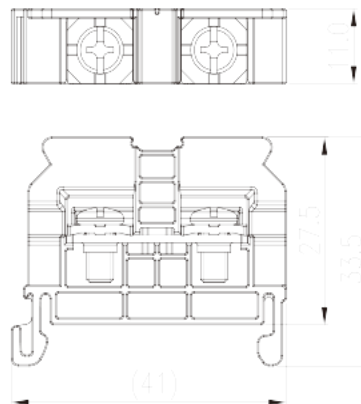
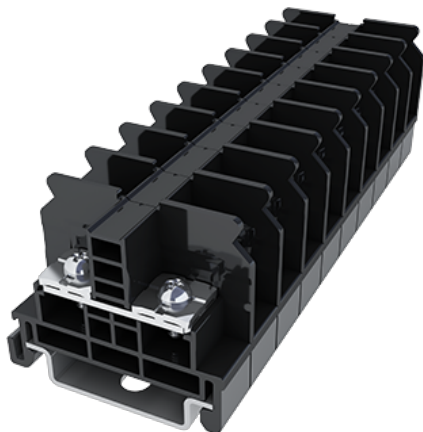


DKB40N

NEMA

>

:2026-07-04



M4, 600V, 40/60A

	DIN Rail terminal blocks, Screw connection
	Rail mounting terminal blocks
	Black (default)
	Screw connection
	Rail mounting
(mm)	41
(mm)	11
(mm)	33.5
	Single level
	2
	PC
	IIIa
UL 94	V2
	1000M at DC 500V
	Copper Alloy
	Tin PLATED

-IEC

(V)		630
(A)		41
(III/3)(V)		630
(II/2)(KV)		8
(III/2)(KV)		8
(III/3)(KV)		8
(mm ²)		0.34
(mm ²)		6
(mm ²)		0.34
(mm ²)		6
2	(mm ²)	6
2	(mm ²)	6
		M4
Philips		PH2
(N.m)		1.2~1.5
(N.m)		1.2
(N.m)		1.5
		13~14 The stripping length depends on the specification provided by the cable lug manufacturer.
		TS-35N、TS-35/15N
		YES
		NO

-UL

(UL/CUL Group B)(V)		600
(UL/CUL Group B)(A)		40
(UL/CUL Group C)(V)		600
(UL/CUL Group C)(A)		40
UL/CUL	AWG	22
UL/CUL	AWG	8
UL/CUL	AWG	22
UL/CUL	AWG	8

&



(YES or NO)	YES
가 (YES or NO)	NO
	125
	-40

UL

(Group B)(AWG)	22-8/(2)22-(2)10
(Group B)(V)	600
(Group B)(A)	40/60
(Group C)(AWG)	22-8/(2)22-(2)10
(Group C)(V)	600
(Group C)(A)	40/60
(Group D)(AWG)	22-8/(2)22-(2)10
(Group D)(V)	600
(Group D)(A)	5

CUL

(Group B)(AWG)	22-8/(2)22-(2)10
(Group B)(V)	600
(Group B)(A)	40/60
(Group C)(AWG)	22-8/(2)22-(2)10
(Group C)(V)	600
(Group C)(A)	40/60
(Group D)(AWG)	22-8/(2)22-(2)10
(Group D)(V)	600
(Group D)(A)	5

--	--

