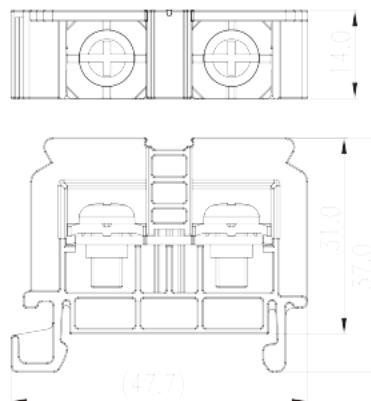
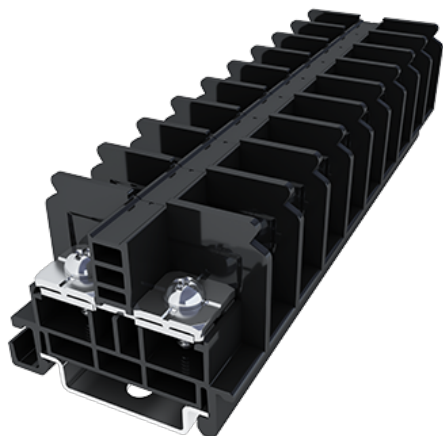


# DKB60N

NEMA

>

:2026-05-17



M5, 600V, 60/90A

	DIN Rail terminal blocks, Screw connection
	Rail mounting terminal blocks
	Black (default)
	Screw connection
	Rail mounting
(mm)	47.7
(mm)	14
(mm)	37
	Single level
	2
	PC
	IIIa
UL 94	V2
	1000M at DC 500V
	Copper Alloy
	Tin PLATED

**-IEC**

(V)		630
(A)		57/76 (with Fork Terminal)
(III/3)(V)		630
(II/2)(KV)		8
(III/2)(KV)		8
(III/3)(KV)		8
(mm <sup>2</sup> )		0.5
(mm <sup>2</sup> )		10
(mm <sup>2</sup> )		0.5
(mm <sup>2</sup> )		10
2	(mm <sup>2</sup> )	10
2	(mm <sup>2</sup> )	10
		M5
Philips		PH2
(N.m)		2.0~2.4
(N.m)		2
(N.m)		2.4
		The stripping length depends on the specification provided by the cablelug manufacturer.
		TS-35N、TS-35/15N
		YES
		NO

**-UL**

(UL/CUL Group B)(V)		600
(UL/CUL Group B)(A)		50/60 (with Fork Terminal)
(UL/CUL Group C)(V)		600
(UL/CUL Group C)(A)		50/60 (with Fork Terminal)
(UL/CUL Group D)(V)		600
(UL/CUL Group D)(A)		0/60 (with Fork Terminal)
UL/CUL	AWG	20
UL/CUL	AWG	6
UL/CUL	AWG	20
UL/CUL	AWG	6



&

(YES or NO)	YES
가 (YES or NO)	NO
	125
	-40

UL

(Group B)(AWG)	20-6/(2)20-(2)8
(Group B)(V)	600
(Group B)(A)	60/90
(Group C)(AWG)	20-6/(2)20-(2)8
(Group C)(V)	600
(Group C)(A)	60/90
(Group D)(AWG)	20-6/(2)20-(2)8
(Group D)(V)	600
(Group D)(A)	5

CUL

(Group B)(AWG)	20-6/(2)20-(2)8
(Group B)(V)	600
(Group B)(A)	60/90
(Group C)(AWG)	20-6/(2)20-(2)8
(Group C)(V)	600
(Group C)(A)	60/90
(Group D)(AWG)	20-6/(2)20-(2)8
(Group D)(V)	600
(Group D)(A)	5

--	--

