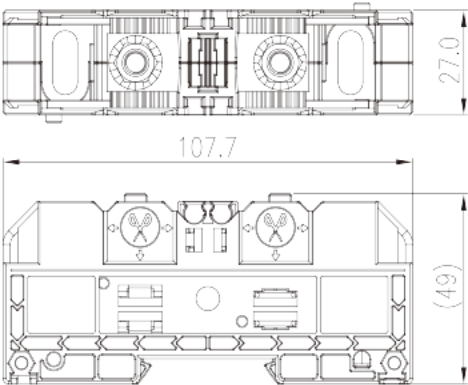
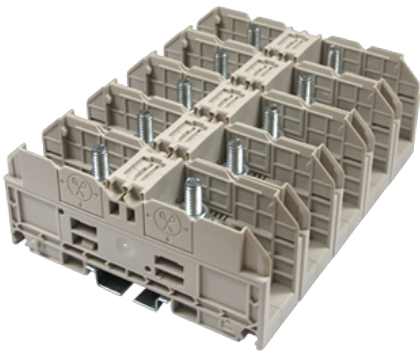


# DKM25

DIN

>

:2026-02-09



M6, 1500V, 100A, Beige (default)

	Feed-through Single Level, Stud Connection
	Feed-through Single Level
(mm)	27
	Refer to drawing
	Stud Connection
(mm)	107.7
(mm)	27
(mm)	49
	Single level
	2
	PA
	I
UL 94	V0
	500M at DC 500V

-IEC

(V)	1500
(A)	101
(III/3)(V)	1500
(III/3)(KV)	8
(mm <sup>2</sup> )	2.5
(mm <sup>2</sup> )	25
(mm <sup>2</sup> )	2.5
(mm <sup>2</sup> )	25
	M6
Philips	10X6.3
(N.m)	3~6
(N.m)	3
(N.m)	6
	The stripping length depends on the specification provided by the cablelug manufacturer
	TS-35
	NO
	NO

## -UL

(UL/CUL Group E)(V)	1500
(UL/CUL Group E)(A)	*Single Cable 85A / Double Cable 100A
UL/CUL AWG	14
UL/CUL AWG	4
UL/CUL AWG	14
UL/CUL AWG	4

## &

(YES or NO)	NO
가 (YES or NO)	NO
	120
	-40

## UL

(Group E)(AWG)	14~4
----------------	------

(Group E) (V)	1500
(Group E) (A)	*Single Cable 85A / Double Cable 100A

CUL

(Group E) (AWG)	14~4
(Group E) (V)	1500
(Group E) (A)	*Single Cable 85A / Double Cable 100A

