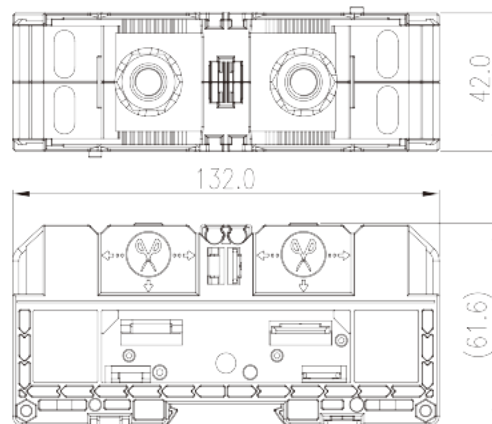
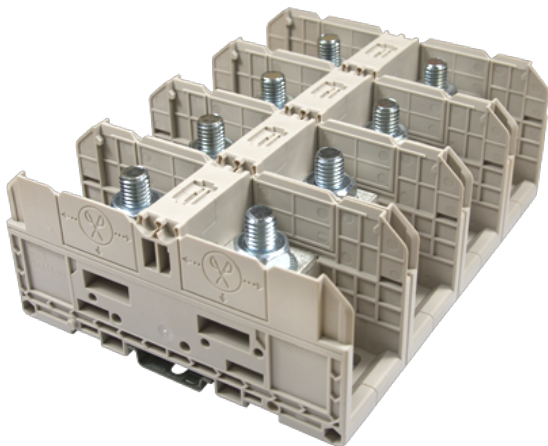


DKM150

DIN

>

:2026-05-14



M10, 1500V, 350A, Beige (default)

	Feed-through Single Level, Stud Connection
	Feed-through Single Level
(mm)	42
	Refer to drawing
	Stud Connection
	Panel Mounting/Rail Mounting
(mm)	132
(mm)	42
(mm)	61.6
	Single level
	2
	PA
	I
UL 94	V0
	500M at DC 500V

**-IEC**

(V)	1500
(A)	309
(III/3)(V)	1500
(III/3)(KV)	8
(mm ²)	10
(mm ²)	150
(mm ²)	10
(mm ²)	150
	M10
(N.m)	10~20
(N.m)	10
(N.m)	20
	The stripping length depends on the specification provided by the cablelug manufacturer
	TS-35
	NO
	NO

-UL

(UL/CUL Group E)(V)	1500
(UL/CUL Group E)(A)	*Single Cable 285A / Double Cable 350A
UL/CUL AWG	10
UL/CUL AWG	300(kcmil)
UL/CUL AWG	10
UL/CUL AWG	300(kcmil)

&

(YES or NO)	NO
가 (YES or NO)	NO
	120
	-40

UL

(Group E)(AWG)	10~300(kcmil)
----------------	---------------

(Group E)(V)	1500
(Group E)(A)	*Single Cable 285A / Double Cable 350A

CUL

(Group E)(AWG)	10~300(kcmil)
(Group E)(V)	1500
(Group E)(A)	*Single Cable 285A / Double Cable 350A

