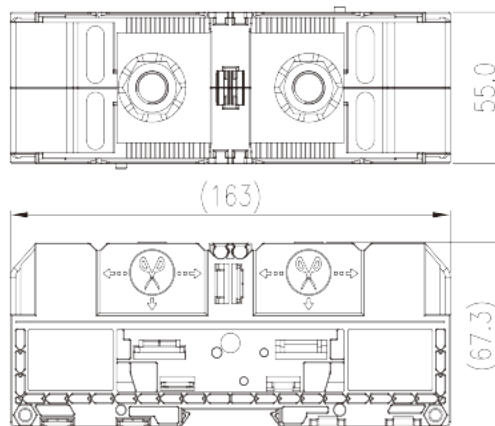
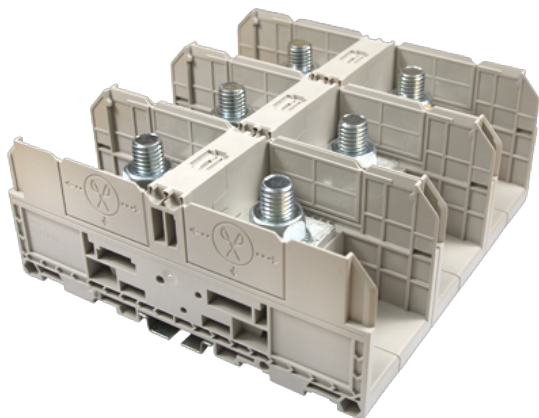


DKM185

DIN

>

:2026-05-14



M12, 1500V, 400A, Beige (default)

	Feed-through Single Level, Stud Connection
	Feed-through Single Level
(mm)	55
	Refer to drawing
	Stud Connection
	Panel Mounting/Rail Mounting
(mm)	163
(mm)	55
(mm)	67
	Single level
	2
	PA
	I
UL 94	V0
	500M at DC 500V

**-IEC**

(V)	1500
(A)	353
(III/3)(V)	1500
(III/3)(KV)	8
(mm ²)	10
(mm ²)	185
(mm ²)	10
(mm ²)	185
	M12
(N.m)	14~31
(N.m)	14
(N.m)	31
	The stripping length depends on the specification provided by the cablelug manufacturer
	TS-35
	NO
	NO

-UL

(UL/CUL Group E)(V)	1500
(UL/CUL Group E)(A)	*Single Cable 310A / Double Cable 400A
UL/CUL AWG	8
UL/CUL AWG	350(kcmil)
UL/CUL AWG	8
UL/CUL AWG	350(kcmil)

&

(YES or NO)	NO
가 (YES or NO)	NO
	120
	-40

UL

(Group E)(AWG)	8~350(kcmil)
----------------	--------------

(Group E)(V)	1500
(Group E)(A)	*Single Cable 310A / Double Cable 400A

CUL

(Group E)(AWG)	8~350(kcmil)
(Group E)(V)	1500
(Group E)(A)	*Single Cable 310A / Double Cable 400A

