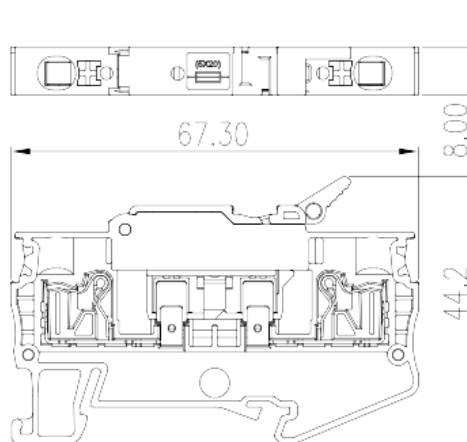
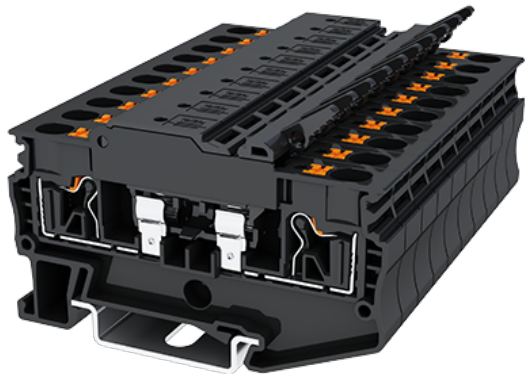


# DP4N-TFH

DIN

>

:2026-07-05



300V, 6.3A, Black (default)

	Fuse Terminal Block, Push-in Design
	Fuse Terminal Block
	Black (default)
	Push-in Design
	Rail Mounting
(mm)	67.3
(mm)	8
(mm)	44.2
( )	1P
	Single level
	2
	PA
	I
UL 94	V0
	500M at DC 500V

**-IEC**

(V)	500
(A)	6.3
(III/3)(V)	500
(III/3)(KV)	6
(mm <sup>2</sup> )	0.2
(mm <sup>2</sup> )	6
(mm <sup>2</sup> )	0.2
(mm <sup>2</sup> )	4
(mm <sup>2</sup> ) , ,	0.25
(mm <sup>2</sup> ) , ,	4
(mm <sup>2</sup> ) , ,	0.25
(mm <sup>2</sup> ) , ,	4
<sup>2</sup> (mm <sup>2</sup> ) , ,	0.5
<sup>2</sup> (mm <sup>2</sup> ) , ,	1
Width)(mm) (Blade thickness x	0.8x4
	10~12
	TS-35
	YES
	NO

**-UL**

(UL/CUL Group B)(V)	300
(UL/CUL Group B)(A)	6.3
(UL/CUL Group C)(V)	300
(UL/CUL Group C)(A)	6.3
UL/CUL AWG	24
UL/CUL AWG	10
UL/CUL AWG	24
UL/CUL AWG	10

&amp;

(YES or NO)	YES
가 (YES or NO)	YES
	120
	-40

UL

(Group B)(AWG)	24~10
(Group B)(V)	300
(Group B)(A)	6.3
(Group C)(AWG)	24~10
(Group C)(V)	300
(Group C)(A)	6.3

CUL

(Group B)(AWG)	24~10
(Group B)(V)	300
(Group B)(A)	6.3
(Group C)(AWG)	24~10
(Group C)(V)	300
(Group C)(A)	6.3

