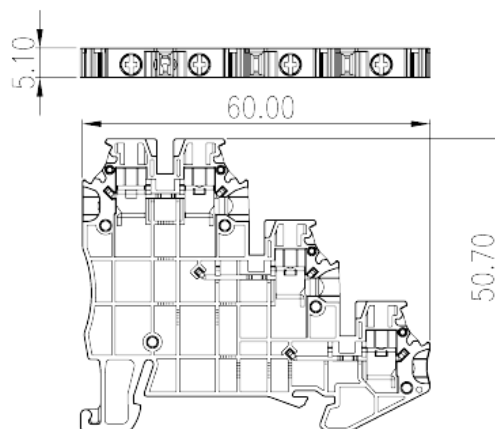
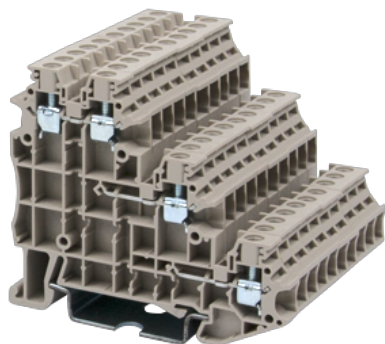


# DK1.5SG

DIN

>

:2026-07-05



M2.5, 300V, 15A, Beige (default)

	Sensor Terminal Block, Screw Connection
	Sensor Terminal Block
	Beige (default)
	Screw Connection
(mm)	60.4
(mm)	5.1
(mm)	50.7
( )	1P
	Four level
	4
	PA
	I
UL 94	V0
	500M at DC 500V

-IEC



(V)		250
(A)		17.5
(III/3)(V)		250
(III/3)(KV)		4
(mm <sup>2</sup> )		0.2
(mm <sup>2</sup> )		2.5
(mm <sup>2</sup> )		0.2
(mm <sup>2</sup> )		2.5
(mm <sup>2</sup> )	,	0.25
(mm <sup>2</sup> )	,	2.5
(mm <sup>2</sup> )	,	0.25
(mm <sup>2</sup> )	,	2.5
2	(mm <sup>2</sup> )	0.2
2	(mm <sup>2</sup> )	1
2	(mm <sup>2</sup> )	0.2
2	(mm <sup>2</sup> )	0.75
(mm <sup>2</sup> )	2 ,	0.5
(mm <sup>2</sup> )	2 ,	1
(mm <sup>2</sup> )	2 ,	0.5
(mm <sup>2</sup> )	2 ,	1
		M2.5
Width)(mm)	(Blade thickness x	0.6x3.5
Philips		PH0
(N.m)		0.4
(N.m)		0.45
		8~9
		TS-35
		YES
		NO

-UL



(UL/CUL Group B)(V)		300
(UL/CUL Group B)(A)		15
(UL/CUL Group C)(V)		300
(UL/CUL Group C)(A)		15
UL/CUL	AWG	24
UL/CUL	AWG	14
UL/CUL	AWG	24
UL/CUL	AWG	14

&amp;

(YES or NO)		YES
가 (YES or NO)		YES
		120
		-40

**UL**

(Group B)(AWG)		24~14
(Group B)(V)		300
(Group B)(A)		15
(Group C)(AWG)		24~14
(Group C)(V)		300
(Group C)(A)		15

**CUL**

(Group B)(AWG)		24~14
(Group B)(V)		300
(Group B)(A)		15
(Group C)(AWG)		24~14
(Group C)(V)		300
(Group C)(A)		15

