

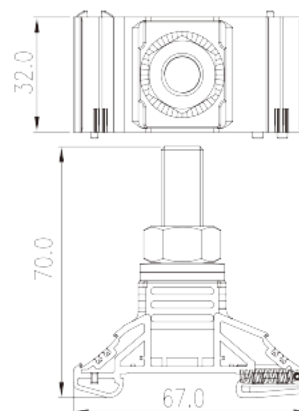
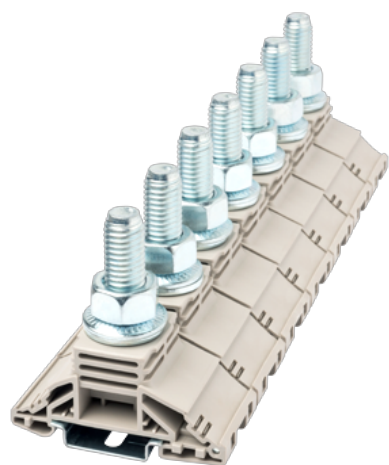
DKM12

DIN

>

:2026-05-14

:1.2



M12, 1000V, 255A, Beige (default)

	DIN Rail terminal blocks, Stud Connection
	Feed-Through single level
	Beige (default)
	Stud Connection
	Rail Mounting
(mm)	67
(mm)	32
(mm)	70
	Single level
	1
	PA
	I
UL 94	V0
	500M at DC 500V

-IEC



(V)	1000
(A)	269
(III/3)(V)	1000
(III/3)(KV)	8
(mm ²)	6
(mm ²)	120
(mm ²)	6
(mm ²)	120
	M12
(N.m)	14
(N.m)	30
	TS-35
	NO
	NO

-UL

(UL/CUL Group E)(V)	1000
(UL/CUL Group E)(A)	255
UL/CUL AWG	10
UL/CUL AWG	250Kcmil

&

(YES or NO)	NO
가 (YES or NO)	NO
	120
	-40

UL

(Group E)(AWG)	10AWG~250Kcmil
(Group E)(V)	1000
(Group E)(A)	255

CUL

(Group E)(AWG)	10AWG~250Kcmil
(Group E)(V)	1000

(Group E)(A)

255

