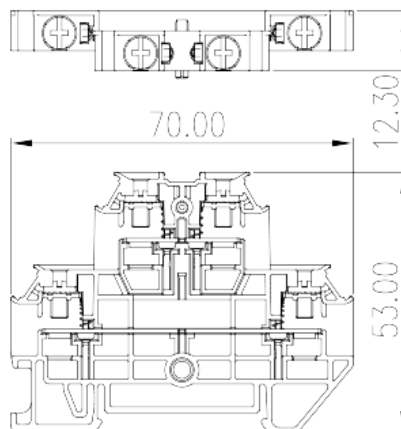
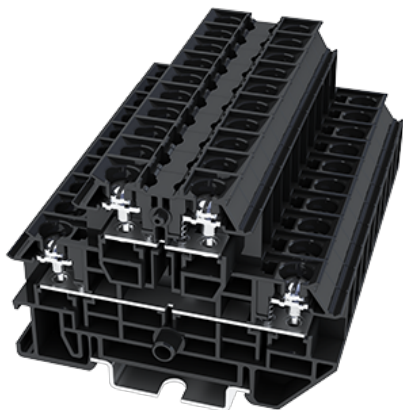


# DKUU20

NEMA

>

:2026-07-04



M3.5, 600V, 20/30A

	Feed-through Bi-level, Stud Connection
	Feed-through Bi-level
	Refer to drawing
	Stud Connection
(mm)	70
(mm)	8.2
(mm)	53
	Double level
	4
	PC
	a
UL 94	V2
	1000M at DC 500V
	COPPER ALLOY
	Tin PLATED

**-IEC**

(V)	800
(A)	20
(III/3)(V)	800
(mm <sup>2</sup> )	8
Philips	PH2
(N.m)	1
(N.m)	1.3
	The stripping length depends on the specification provided by the cable lug manufacturer.
	TS-35N、TS-35/15N
	YES
	NO

**-UL**

(UL/CUL Group B)(V)	600
(UL/CUL Group B)(A)	20
(UL/CUL Group C)(V)	600
(UL/CUL Group C)(A)	20
(UL/CUL Group D)(V)	600
(UL/CUL Group D)(A)	20

**&**

가 (YES or NO)	YES
	125
	-40

**UL**

(Group B)(AWG)	26-12/(2)26-(2)14
(Group B)(V)	600
(Group B)(A)	20/30
(Group C)(AWG)	26-12/(2)26-(2)14
(Group C)(V)	600
(Group C)(A)	20/30
(Group D)(AWG)	26-12/(2)26-(2)14

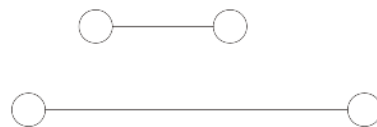
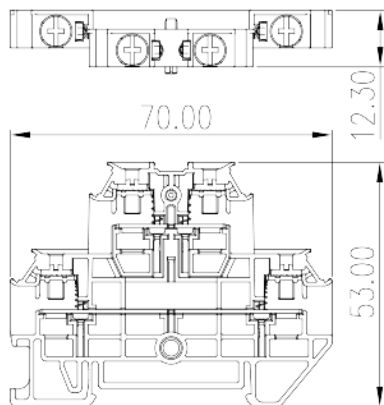
(Group D) (V)	600
(Group D) (A)	5

CUL

(Group B) (AWG)	26-12/(2)26-(2)14
(Group B) (V)	600
(Group B) (A)	20/30
(Group C) (AWG)	26-12/(2)26-(2)14
(Group C) (V)	600
(Group C) (A)	20/30
(Group D) (AWG)	26-12/(2)26-(2)14
(Group D) (V)	600
(Group D) (A)	5

VDE

(mm <sup>2</sup> )	0.2~2.5
(V)	800
(A)	20





Delight Through Connections