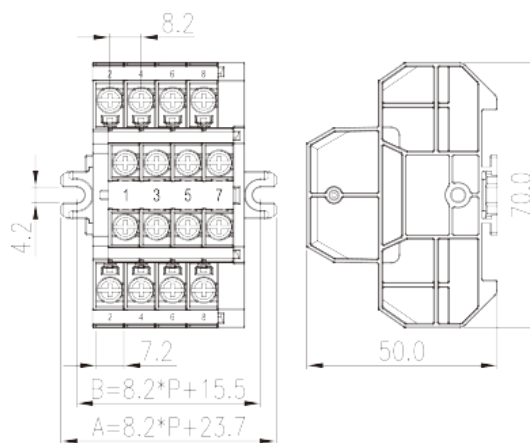
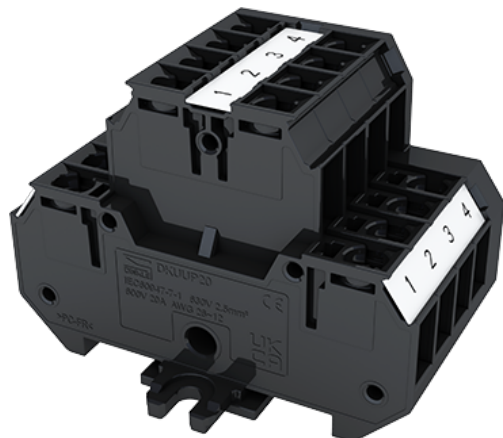


DKUUP20-XXPK

NEMA

>

:2026-07-05



M3.5, 600V, 20/30A

	Panel Mounting Bi-level, Stud Connection
	Panel Mounting Bi-level
(mm)	8.2
	Refer to drawing
	Stud Connection
(mm)	$8.2 \cdot P + 23.7$
(mm)	70
(mm)	50
	Double level
	4~80
	PC
	a
UL 94	V2
	1000M at DC 500V
	COPPER ALLOY
	Tin PLATED

**-IEC**

(V)	800
(A)	20
(III/3)(V)	800
(III/3)(KV)	8
	M3.5
Philips	PH2
(N.m)	1
(N.m)	1.3
(N.m)	0.8
	The stripping length depends on the specification provided by the cable lug manufacturer
	YES
	NO

-UL

(UL/CUL Group B)(V)	600
(UL/CUL Group B)(A)	20
(UL/CUL Group C)(V)	600
(UL/CUL Group C)(A)	20
(UL/CUL Group D)(V)	600
(UL/CUL Group D)(A)	20

&

가 (YES or NO)	YES
	125
	-40

UL

(Group B)(AWG)	26-12/(2)26-(2)14
(Group B)(V)	600
(Group B)(A)	20/30
(Group C)(AWG)	26-12/(2)26-(2)14
(Group C)(V)	600
(Group C)(A)	20/30

(Group D)(AWG)	26-12/(2)26-(2)14
(Group D)(V)	600
(Group D)(A)	5

CUL

(Group B)(AWG)	26-12/(2)26-(2)14
(Group B)(V)	600
(Group B)(A)	20/30
(Group C)(AWG)	26-12/(2)26-(2)14
(Group C)(V)	600
(Group C)(A)	20/30
(Group D)(AWG)	26-12/(2)26-(2)14
(Group D)(V)	600
(Group D)(A)	5

VDE

(mm ²)	0.2~2.5
(V)	800
(A)	20

