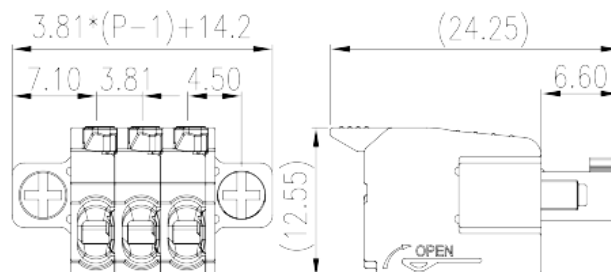
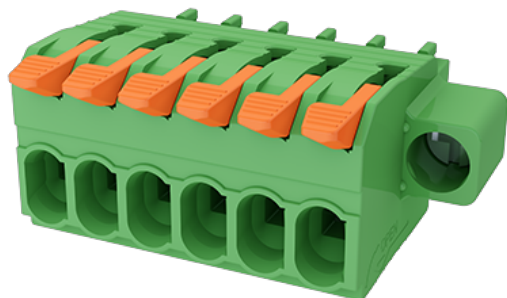


0256-62XX

PCB > PCB -

:2026-07-04



Pitch : 3.81 mm, 300V, 8A

	PCB Connector Plug, Push-in Design
	PCB Connector – Plug
(mm)	3.81
	Green (default)
	Push in Design
	With screw flange
(mm)	$3.81 * (P - 1) + 14.2$
(mm)	24.25
(mm)	12.55
()	02P~24P
	Single level
	PA
	I
UL 94	V0
	500M at DC 500V
	COPPER ALLOY

Tin PLATED

-IEC

(V)	320
(A)	10
(II/2)(V)	320
(III/2)(V)	160
(III/3)(V)	160
(II/2)(KV)	2.5
(III/2)(KV)	2.5
(III/3)(KV)	2.5
(mm ²)	0.14
(mm ²)	1.5
(mm ²)	0.14
(mm ²)	1.5
(mm ²) , ,	0.25
(mm ²) , ,	1.5
(mm ²) , ,	0.25
(mm ²) , ,	0.75
2 (mm ²) , ,	0.5
2 (mm ²) , ,	0.75
(N.m)	0.2
	9~10

-UL

(UL/CUL Group B)(V)	300
(UL/CUL Group B)(A)	8
(UL/CUL Group D)(V)	300
(UL/CUL Group D)(A)	8
UL/CUL AWG	28
UL/CUL AWG	16
UL/CUL AWG	28

UL/CUL	AWG	16
&		
가	(YES or NO)	YES
		120
		-40

