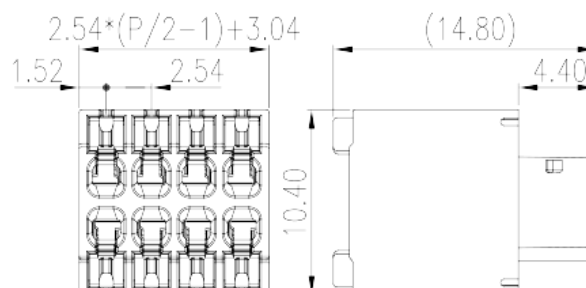
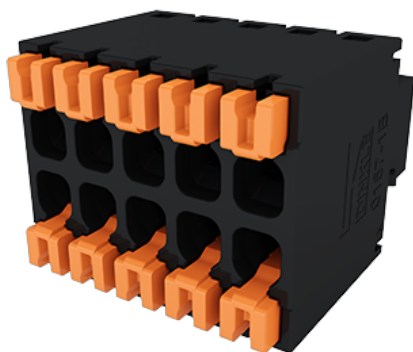


# 0157-1BXX

PCB > PCB -

:2025-07-20



Pitch : 2.54mm, 150V, 6A

	PCB Connector Plug, Push-in Design
	PCB Connector – Plug
(mm)	2.54
	Black (default)
	Push in Design
	Without
(mm)	$2.54 * (P/2 - 1) + 3.04$
(mm)	10.4
(mm)	14.8
( )	04P~32P
	Double level
	4~32
	PA
	I
UL 94	V0
	500M at DC 500V



		COPPER ALLOY
		Tin PLATED
<b>-IEC</b>		
(V)		160
(A)		6
(II/2)(V)		160
(III/2)(V)		160
(III/3)(V)		50
(II/2)(KV)		2.5
(III/2)(KV)		2.5
(III/3)(KV)		2.5
(mm <sup>2</sup> )		0.2
(mm <sup>2</sup> )		0.5
(mm <sup>2</sup> )		0.2
(mm <sup>2</sup> )		0.5
(mm <sup>2</sup> )		0.25
(mm <sup>2</sup> )		0.5
(mm <sup>2</sup> )		0.25
(mm <sup>2</sup> )		0.25
Width)(mm)	(Blade thickness x	0.4x2.5
		7~8

**-UL**

(UL/CUL Group B)(V)		160
(UL/CUL Group B)(A)		6
(UL/CUL Group C)(V)		50
(UL/CUL Group C)(A)		6
UL/CUL	AWG	26
UL/CUL	AWG	18
UL/CUL	AWG	26
UL/CUL	AWG	18

&

가 (YES or NO)	YES
	120
	-40

UL

(Group B) (AWG)	26~18
(Group B) (V)	150
(Group B) (A)	6
(Group C) (AWG)	26~18
(Group C) (V)	50
(Group C) (A)	6

