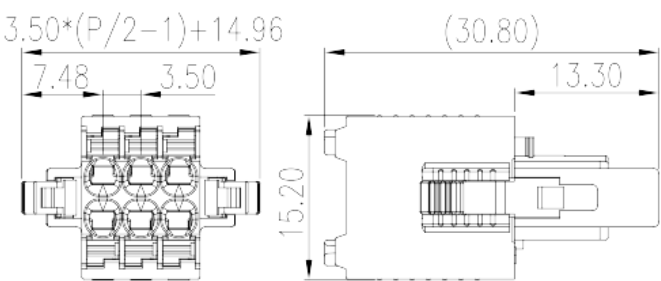
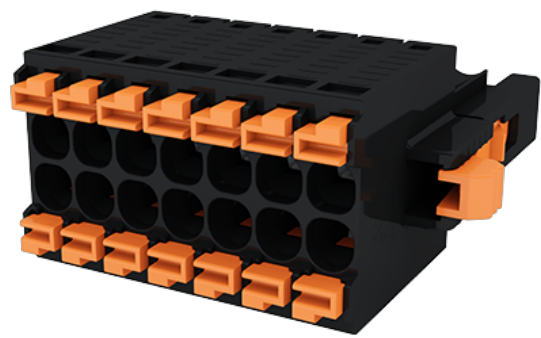


# 0156-9CXX

PCB > PCB -

:2026-02-09



Pitch : 3.50mm, 300V, 10A

	PCB Connector Plug, Push-in Design
	PCB Connector – Plug
(mm)	3.50
	Black (default)
	Push in Design
	With lock flange
(mm)	$3.50 \times (P/2 - 1) + 14.96$
(mm)	15.2
(mm)	15.2
( )	04P~40P
	Double level
	PA
	I
UL 94	V0
	500M at DC 500V
	HIGH PERFORMANCE COPPER ALLOY

## Tin PLATED

## -IEC

(V)	320
(A)	10
(II/2)(V)	320
(III/2)(V)	160
(III/3)(V)	160
(II/2)(KV)	2.5
(III/2)(KV)	2.5
(III/3)(KV)	2.5
(mm <sup>2</sup> )	0.2
(mm <sup>2</sup> )	1.5
(mm <sup>2</sup> )	0.2
(mm <sup>2</sup> )	1.5
(mm <sup>2</sup> ) , ,	0.25
(mm <sup>2</sup> ) , ,	1
(mm <sup>2</sup> ) , ,	0.25
(mm <sup>2</sup> ) , ,	0.75
<sup>2</sup> (mm <sup>2</sup> ) , ,	0.75
<sup>2</sup> (mm <sup>2</sup> ) , ,	0.75
Width)(mm) (Blade thickness x	0.4x2.5
	11~12

## -UL

(UL/CUL Group B)(V)	300
(UL/CUL Group B)(A)	10
(UL/CUL Group D)(V)	300
(UL/CUL Group D)(A)	10
UL/CUL AWG	26
UL/CUL AWG	16

UL/CUL	AWG	26
UL/CUL	AWG	16

&amp;

가 (YES or NO)	YES
	120
	-40

UL

(Group B)(AWG)	26~16
(Group B)(V)	300
(Group B)(A)	10
(Group D)(AWG)	26~16
(Group D)(V)	300
(Group D)(A)	10

CUL

(Group B)(AWG)	26~16
(Group B)(V)	300
(Group B)(A)	10
(Group D)(AWG)	26~16
(Group D)(V)	300
(Group D)(A)	10

