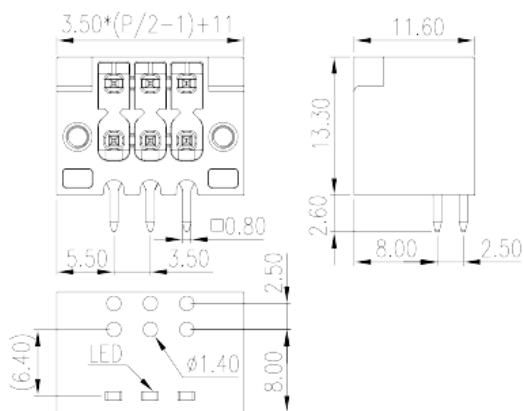
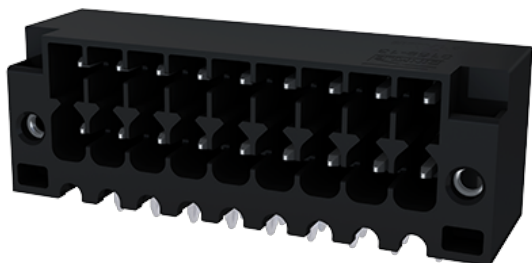


0159-13XXL

PCB > PCB -

:2026-04-02



Pitch: 3.50mm, 300V, 8A

	PCB Connector – Socket, Reflow Soldering
	PCB Connector – Socket
(mm)	3.50
	Black (default)
	With threaded flange
	Reflow Soldering
(mm)	$3.50 \cdot (P/2 - 1) + 11$
(mm)	11.6
(mm)	13.3
(x) (mm)	0.8X0.8
()	04P~40P
	Double level

	HIGH-TEMPERATURE PLASTICS
	IIIa
UL 94	V0
	500M at DC 500V



	COPPER ALLOY
	Tin PLATED
MSL	1

-IEC

(V)	320
(A)	8
(II/2)(V)	320
(III/2)(V)	160
(III/3)(V)	160
(II/2)(KV)	2.5
(III/2)(KV)	2.5
(III/3)(KV)	2.5
(N.m)	0.1

-UL

(UL/CUL Group B)(V)	150
(UL/CUL Group B)(A)	8
(UL/CUL Group C)(V)	50
(UL/CUL Group C)(A)	8
(UL/CUL Group D)(V)	300
(UL/CUL Group D)(A)	8

&

가 (YES or NO)	YES
	120
	-40

UL

(Group B)(V)	150
(Group B)(A)	8
(Group C)(V)	20
(Group C)(A)	8
(Group D)(V)	300
(Group D)(A)	8

CUL

(Group B) (V)	150
(Group B) (A)	8
(Group C) (V)	50
(Group C) (A)	8
(Group D) (V)	300
(Group D) (A)	8

