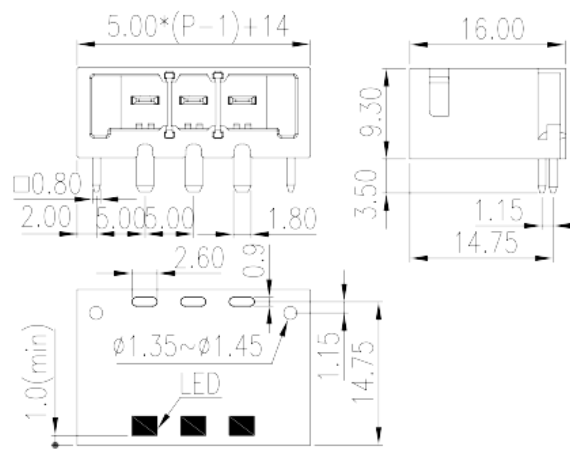
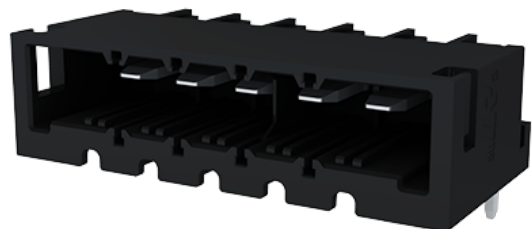


0227-23XX

PCB > PCB -

:2026-07-05



Pitch : 5.00mm, 300V, 15A

	PCB Connector – Socket, Wave soldering
	PCB Connector – Socket
(mm)	5
	Black (default)
	With lock flange
	Wave soldering
(mm)	$5.00 \times (P-1) + 14$
(mm)	16
(mm)	9.3
(x) (mm)	0.8x1.8
PCB (mm)	0.9*2.6
()	02P~16P
	Single level
	PA
	I
UL 94	V0



	500M at DC 500V
	COPPER ALLOY
	Tin PLATED

-IEC

(V)	630
(A)	18
(II/2)(V)	630
(III/2)(V)	320
(III/3)(V)	320
(II/2)(KV)	4
(III/2)(KV)	4
(III/3)(KV)	4

-UL

(UL/CUL Group B)(V)	300
(UL/CUL Group B)(A)	15
(UL/CUL Group D)(V)	300
(UL/CUL Group D)(A)	15

&

가 (YES or NO)	YES
	120
	-40

UL

(Group B)(V)	300
(Group B)(A)	15
(Group D)(V)	300
(Group D)(A)	15

CUL

(Group B)(V)	300
(Group B)(A)	15
(Group D)(V)	300

