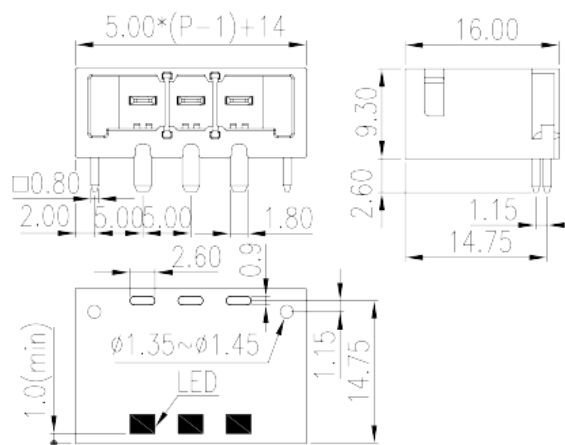
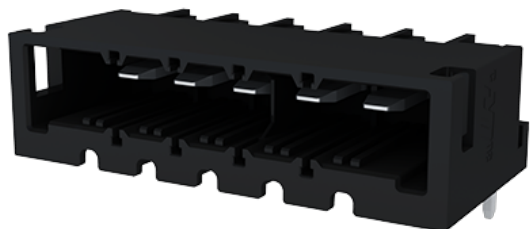


# 0227-23XXL

PCB > PCB -

:2026-07-05



Pitch :5.00mm, 300V, 15A

	PCB Connector – Socket, Reflow Soldering
	PCB Connector – Socket
(mm)	5
	Black (default)
	With lock flange
	Reflow Soldering
(mm)	5.00*(P-1)+14
(mm)	16
(mm)	9.3
( x ) (mm)	0.8x1.8
PCB (mm)	0.9*2.6
( )	02P~16P
	Single level
	HIGH-TEMPERATURE PLASTICS
	I
UL 94	V0



	500M at DC 500V
	COPPER ALLOY
	Tin PLATED
MSL	2

**-IEC**

(V)	630
(A)	18
(II/2)(V)	630
(III/2)(V)	320
(III/3)(V)	320
(II/2)(KV)	4
(III/2)(KV)	4
(III/3)(KV)	4

**-UL**

(UL/CUL Group B)(V)	300
(UL/CUL Group B)(A)	15
(UL/CUL Group D)(V)	300
(UL/CUL Group D)(A)	15

**&**

가 (YES or NO)	YES
	120
	-40

**UL**

(Group B)(V)	300
(Group B)(A)	15
(Group D)(V)	300
(Group D)(A)	15

--	--

