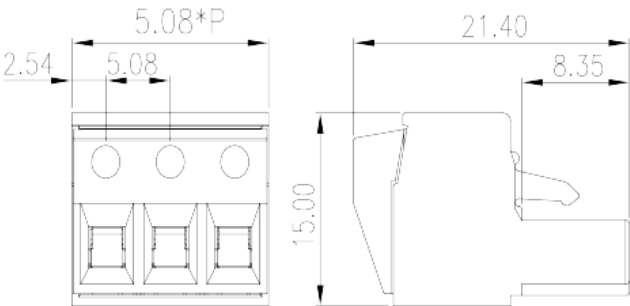
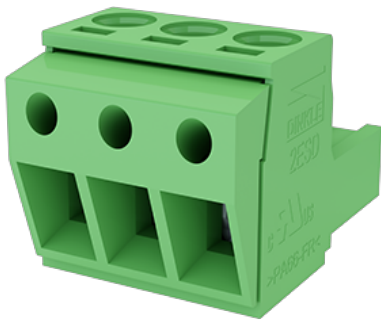


2ESDVS-03P

PCB > PCB -

:2026-02-09



Pitch : 5.08mm, M2.5, 300V, 15A

	PCB Connector-Plug, Screw Connection
	PCB Connector – Plug
(mm)	5.08
	Green (default)
	Screw Connection
	Without
(mm)	15.24
(mm)	21.4
(mm)	15
()	03P
	Single level
	PA
	I
UL 94	V0
	500M at DC 500V
	COPPER ALLOY

			Tin PLATED
-IEC			
(V)			630
(A)			18
(II/2)(V)			630
(III/2)(V)			320
(III/3)(V)			320
(II/2)(KV)			4
(III/2)(KV)			4
(III/3)(KV)			4
(mm ²)			0.2
(mm ²)			4
(mm ²)			0.2
(mm ²)			2.5
(mm ²)	,	,	0.25
(mm ²)	,	,	2.5
(mm ²)	,	,	0.25
(mm ²)	,	,	2.5
2	(mm ²)		0.2
2	(mm ²)		1.5
2	(mm ²)		0.2
2	(mm ²)		1.5
(mm ²) ²	,	,	0.25
(mm ²) ²	,	,	1
(mm ²) ²	,	,	0.5
(mm ²) ²	,	,	1.5
			M2.5
Width)(mm)	(Blade thickness x		0.6x3.5
(N.m)			0.4

(N.m)	0.5
	7~8

-UL

(UL/CUL Group B)(V)	300
(UL/CUL Group B)(A)	15
(UL/CUL Group D)(V)	300
(UL/CUL Group D)(A)	15
UL/CUL AWG	28
UL/CUL AWG	12
UL/CUL AWG	30
UL/CUL AWG	12

&

가 (YES or NO)	YES
	120
	-40

UL

(Group B)(AWG)	28~12(Sol) 30~12(Str)
(Group B)(V)	300
(Group B)(A)	15
(Group D)(AWG)	28~12(Sol) 30~12(Str)
(Group D)(V)	300
(Group D)(A)	15

CUL

(Group B)(AWG)	28~12(Sol) 30~12(Str)
(Group B)(V)	300
(Group B)(A)	15
(Group D)(AWG)	28~12(Sol) 30~12(Str)
(Group D)(V)	300
(Group D)(A)	15

