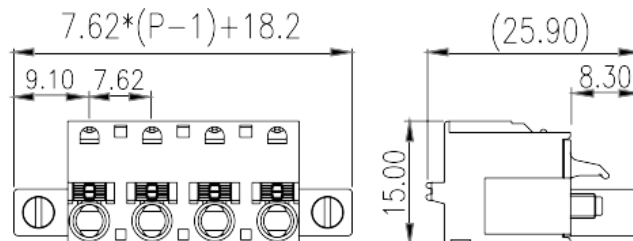
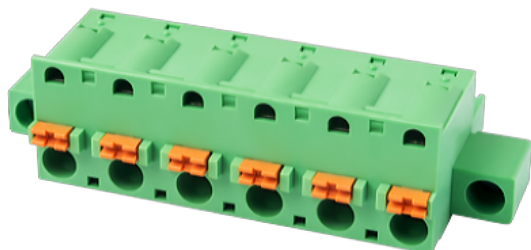


# 3ESDSRHM-XXP

PCB > PCB -

:2026-07-04



Pitch: 7.62 mm, 300V, 18A

	PCB Connector-Plug, Push-in Design
	PCB Connector – Plug
(mm)	7.62
	Green (default)
	Push in Design
	With screw flange
(mm)	$7.62 \cdot (P-1) + 18.2$
(mm)	15
(mm)	25.9
( )	02P~12P
	Single level
	PA
	I
UL 94	V0
	500M at DC 500V
	HIGH PERFORMANCE COPPER ALLOY

Tin PLATED

**-IEC**

(V)	1000
(A)	15
(II/2)(V)	1000
(III/2)(V)	630
(III/3)(V)	500
(II/2)(KV)	6
(III/2)(KV)	6
(III/3)(KV)	6
(mm <sup>2</sup> )	0.2
(mm <sup>2</sup> )	2.5
(mm <sup>2</sup> )	0.2
(mm <sup>2</sup> )	2.5
(mm <sup>2</sup> ) , ,	0.25
(mm <sup>2</sup> ) , ,	2.5
(mm <sup>2</sup> ) , ,	0.25
(mm <sup>2</sup> ) , ,	2.5
<sup>2</sup> (mm <sup>2</sup> ) , ,	0.5
<sup>2</sup> (mm <sup>2</sup> ) , ,	1
Width)(mm) (Blade thickness x	0.6x3.5
(N.m)	0.3
	10~11

**-UL**

(UL/CUL Group B)(V)	300
(UL/CUL Group B)(A)	18
(UL/CUL Group D)(V)	300
(UL/CUL Group D)(A)	18
UL/CUL AWG	26



UL/CUL	AWG	12
UL/CUL	AWG	26
UL/CUL	AWG	12

&

가	(YES or NO)	YES
		120
		-40

### UL

(Group B)(AWG)		26~12
(Group B)(V)		300
(Group B)(A)		18
(Group D)(AWG)		26~12
(Group D)(V)		300
(Group D)(A)		18

### CUL

(Group B)(AWG)		26~12
(Group B)(V)		300
(Group B)(A)		18
(Group D)(AWG)		26~12
(Group D)(V)		300
(Group D)(A)		18

--	--	--

