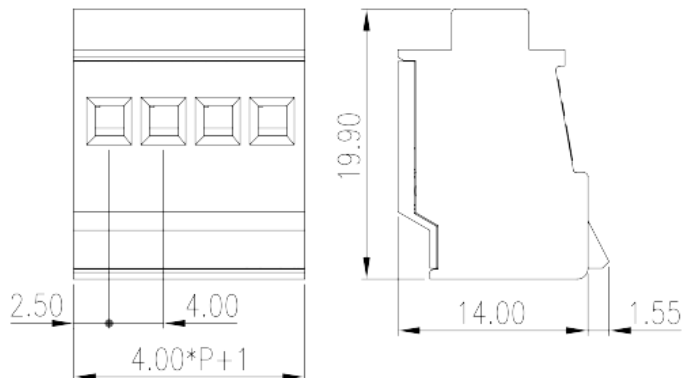
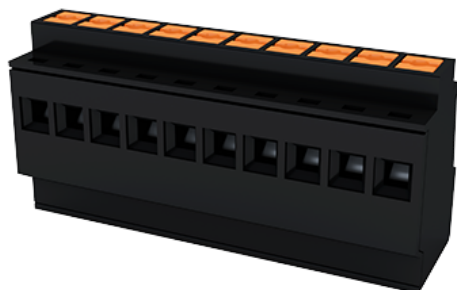


0162-06XX

PCB > PCB -

:2026-07-06



Pitch: 4.00mm, 300V, 10A

	PCB Connector-Plug, Push-in Design
	PCB Connector – Plug
(mm)	4.00
	Black (default)
	Push in Design
	With lock flange
(mm)	$4.00 * (P - 1) + 5$
(mm)	14
(mm)	19.9
()	02P~24P
	Single level
	PA
	I
UL 94	V0
	500M at DC 500V
	HIGH PERFORMANCE COPPER ALLOY



Tin PLATED

-IEC

(V)	400
(A)	10
(II/2)(V)	400
(III/2)(V)	320
(III/3)(V)	250
(II/2)(KV)	4
(III/2)(KV)	4
(III/3)(KV)	4
(mm ²)	0.2
(mm ²)	1.5
(mm ²)	0.2
(mm ²)	1.5
(mm ²) , ,	0.25
(mm ²) , ,	1.5
(mm ²) , ,	0.25
(mm ²) , ,	1.5
Width)(mm) (Blade thickness x	0.5x3
	10~11

-UL

(UL/CUL Group B)(V)	300
(UL/CUL Group B)(A)	10
(UL/CUL Group D)(V)	300
(UL/CUL Group D)(A)	10
UL/CUL AWG	24
UL/CUL AWG	12
UL/CUL AWG	24
UL/CUL AWG	12

&

가 (YES or NO)	YES
	120
	-40

UL

(Group B)(AWG)	24~12
(Group B)(V)	300
(Group B)(A)	10
(Group D)(AWG)	24~12
(Group D)(V)	300
(Group D)(A)	10

CUL

(Group B)(AWG)	24~12
(Group B)(V)	300
(Group B)(A)	10
(Group D)(AWG)	24~12
(Group D)(V)	300
(Group D)(A)	10

