

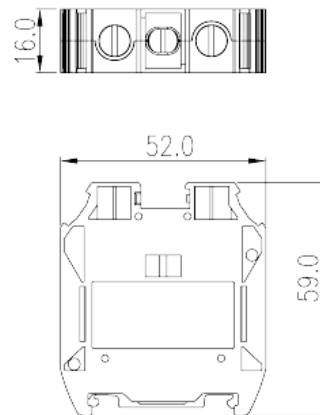
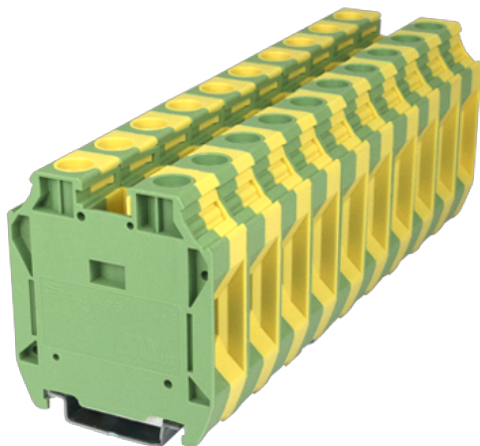
DK35H-PE

DIN

>

:2026-07-04

:1.2



M6, 600V, Yellow-Green (default)

	Grounding Terminal Block, Screw Connection
	Grounding Terminal Block
(mm)	16
	Yellow-Green (default)
	Screw Connection
	Rail mounting
(mm)	52
(mm)	16
(mm)	59
()	1P
	Single level
	2
	PA
	I
UL 94	V0
	500M at DC 500V

-IEC

(V)	1000
(III/3)(V)	1000
(III/3)(KV)	8
(mm ²)	2.5
(mm ²)	35 (for copper rail) 25 (for steel rail)
(mm ²)	2.5
(mm ²)	35 (for copper rail) 25 (for steel rail)
(mm ²) , ,	2.5
(mm ²) , ,	35 (for copper rail) 25 (for steel rail)
(mm ²) , ,	2.5
(mm ²) , ,	35 (for copper rail) 25 (for steel rail)
2 (mm ²)	2.5
2 (mm ²)	16
2 (mm ²)	2.5
2 (mm ²)	10
(mm ²) ² , ,	2.5
(mm ²) ² , ,	10
2 (mm ²) , ,	2.5
2 (mm ²) , ,	10
	M6 (wire) M4 (rail)
Width)(mm) (Blade thickness x	1.0x5.5
(N.m)	3.5 (wire) 1.2 (rail)
	16~18
	TS-35、 TS-35/15
	NO
	YES

-UL

(UL/CUL Group B)(V)	600
---------------------	-----

(UL/CUL Group C)(V)		600
UL/CUL	AWG	12
UL/CUL	AWG	1 (for copper rail) 2 (for steel rail)
UL/CUL	AWG	12
UL/CUL	AWG	1 (for copper rail) 2 (for steel rail)

&

(YES or NO)		YES
가 (YES or NO)		YES
		120
		-40

UL

(Group B)(AWG)		12~1 (for copper rail) 12~2 (for steel rail)
(Group B)(V)		600
(Group C)(AWG)		12~1 (for copper rail) 12~2 (for steel rail)
(Group C)(V)		600

CUL

(Group B)(AWG)		12~1 (for copper rail) 12~2 (for steel rail)
(Group B)(V)		600
(Group C)(AWG)		12~1 (for copper rail) 12~2 (for steel rail)
(Group C)(V)		600

