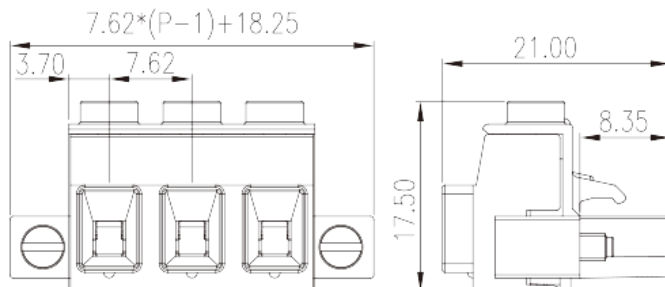
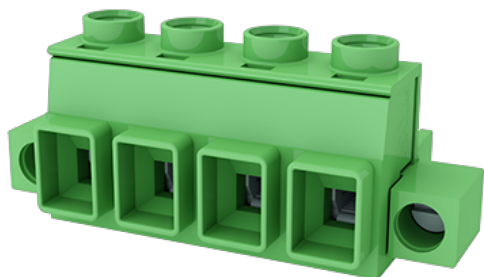


3ESDVHM-XXP

PCB > PCB -

:2026-07-04



Pitch: 7.62mm, M2.5, 600V, 20A

	PCB Connector-Plug, Screw Connection
	PCB Connector – Plug
(mm)	7.62
	Green (default)
	Screw Connection
	With screw flange
(mm)	$7.62 * (P - 1) + 18.25$
(mm)	21
(mm)	17.5
()	02P~12P
	Single level
	PA
	I
UL 94	V0
	500M at DC 500V
	HIGH PERFORMANCE COPPER ALLOY



Tin PLATED

-IEC

(V)	1000
(A)	18
(II/2)(V)	1000
(III/2)(V)	1000
(III/3)(V)	1000
(II/2)(KV)	6
(III/2)(KV)	8
(III/3)(KV)	8
(mm ²)	0.2
(mm ²)	4
(mm ²)	0.2
(mm ²)	2.5
(mm ²) , ,	0.25
(mm ²) , ,	2.5
(mm ²) , ,	0.25
(mm ²) , ,	2.5
2 (mm ²)	0.2
2 (mm ²)	1
2 (mm ²)	0.2
2 (mm ²)	1.5
(mm ²) ² , ,	0.25
(mm ²) ² , ,	1
2 (mm ²) , ,	0.5
2 (mm ²) , ,	1
	M2.5
Width)(mm) (Blade thickness x	0.6x3.5
(N.m)	0.4



(N.m)	0.5
(N.m)	0.3
	7~8

-UL

(UL/CUL Group B)(V)	600
(UL/CUL Group B)(A)	20
(UL/CUL Group C)(V)	600
(UL/CUL Group C)(A)	20
(UL/CUL Group D)(V)	600
(UL/CUL Group D)(A)	20
UL/CUL AWG	28
UL/CUL AWG	12
UL/CUL AWG	30
UL/CUL AWG	12

&

가 (YES or NO)	YES
	120
	-40

UL

(Group B)(AWG)	28~12(Sol) 30~12(Str)
(Group B)(V)	600
(Group B)(A)	20
(Group C)(AWG)	28~12(Sol) 30~12(Str)
(Group C)(V)	600
(Group C)(A)	20
(Group D)(AWG)	28~12(Sol) 30~12(Str)
(Group D)(V)	600
(Group D)(A)	20

CUL

(Group B)(AWG)	28~12(Sol) 30~12(Str)
(Group B)(V)	600

(Group B) (A)	20
(Group C) (AWG)	28~12(Sol) 30~12(Str)
(Group C) (V)	600
(Group C) (A)	20
(Group D) (AWG)	28~12(Sol) 30~12(Str)
(Group D) (V)	600
(Group D) (A)	20

