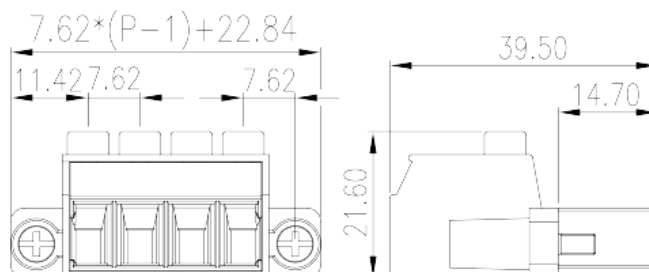
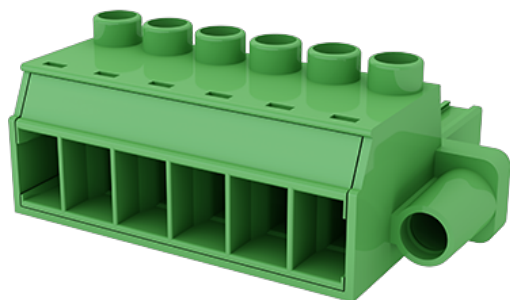


EC762HM-XXP

PCB > PCB -

:2026-07-06



Pitch: 7.62mm, M3, 600V, 41A

	PCB Connector-Plug, Screw Connection
	PCB Connector – Plug
(mm)	7.62
	Green (default)
	Screw Connection
	With screw flange
(mm)	$7.62 * (P - 1) + 22.84$
(mm)	39.5
(mm)	21.6
()	02P~10P
	Single level
	PA
	I
UL 94	V0
	500M at DC 500V
	HIGH PERFORMANCE COPPER ALLOY



Tin PLATED

-IEC

(V)	1000
(A)	41
(II/2)(V)	1000
(III/2)(V)	1000
(III/3)(V)	800
(II/2)(KV)	8
(III/2)(KV)	8
(III/3)(KV)	8
(mm ²)	0.2
(mm ²)	10
(mm ²)	0.2
(mm ²)	6
(mm ²) , ,	0.25
(mm ²) , ,	6
(mm ²) , ,	0.25
(mm ²) , ,	4
2 (mm ²)	0.2
2 (mm ²)	2.5
2 (mm ²)	0.2
2 (mm ²)	4
(mm ²) ² , ,	0.25
(mm ²) ² , ,	1.5
2 (mm ²) , ,	0.5
2 (mm ²) , ,	2.5
	M3
Width)(mm) (Blade thickness x	0.8x4, PH2
(N.m)	0.5

(N.m)	0.6
(N.m)	0.5
	10~11

-UL

(UL/CUL Group B)(V)	600
(UL/CUL Group B)(A)	41
(UL/CUL Group C)(V)	600
(UL/CUL Group C)(A)	41
(UL/CUL Group D)(V)	600
(UL/CUL Group D)(A)	41
UL/CUL AWG	30
UL/CUL AWG	8
UL/CUL AWG	30
UL/CUL AWG	8

&

가 (YES or NO)	YES
	120
	-40

UL

(Group B)(AWG)	30~8
(Group B)(V)	600
(Group B)(A)	41
(Group C)(AWG)	30~8
(Group C)(V)	600
(Group C)(A)	41

CUL

(Group B)(AWG)	30~8
(Group B)(V)	600
(Group B)(A)	41
(Group C)(AWG)	30~8
(Group C)(V)	600

