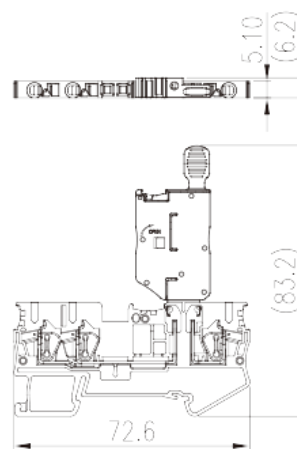
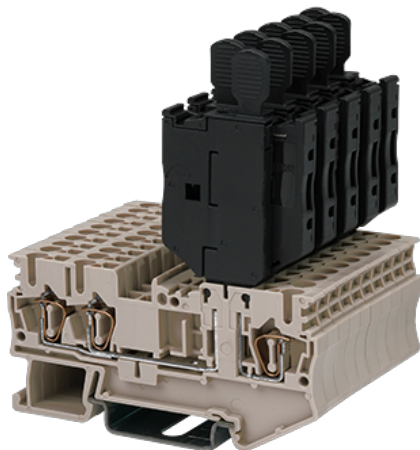


# AK2.5-TN-M

DIN

>

:2026-05-14



300V, 10A, Beige (default)

	Fuse Terminal Block, Push-in Design
	Fuse Terminal Block
	Beige (default)
	Spring Clamp Connection
(mm)	72.6
(mm)	5.1
(mm)	83.2 84.7 ( TS-35N ) / 92.2 ( TS-35/15N )
	Single level
	2
	PA
	I
UL 94	V0
	500M at DC 500V
	-IEC
(V)	400



(A)		6.3
(III/3)(V)		400
(III/3)(KV)		4
(mm <sup>2</sup> )		0.2
(mm <sup>2</sup> )		2.5
(mm <sup>2</sup> )		0.2
(mm <sup>2</sup> )		2.5
(mm <sup>2</sup> )	,	0.25
(mm <sup>2</sup> )	,	2.5
(mm <sup>2</sup> )	,	0.25
(mm <sup>2</sup> )	,	2.5
	<sup>2</sup> (mm <sup>2</sup> ) ,	0.5
	<sup>2</sup> (mm <sup>2</sup> ) ,	1
Width)(mm)	(Blade thickness x	0.6x3.5
		10~11
		TS-35N、TS-35/15N
		YES
		NO

**-UL**

(UL/CUL Group B)(V)		300
(UL/CUL Group B)(A)		10
UL/CUL	AWG	28
UL/CUL	AWG	12
UL/CUL	AWG	28
UL/CUL	AWG	12

**&**

(YES or NO)		YES
가 (YES or NO)		YES
		120

