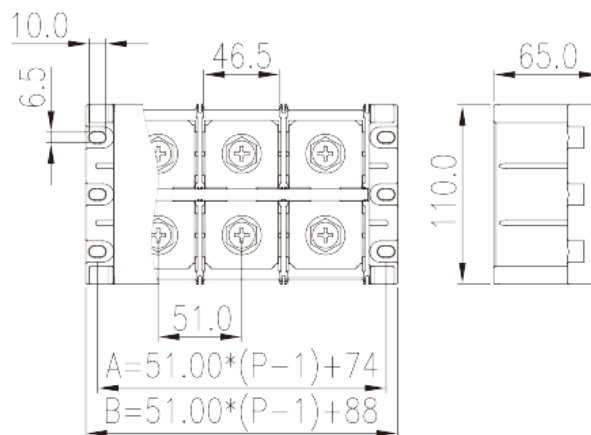
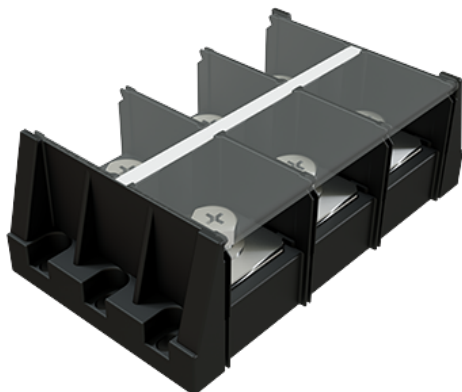


# DKBH420-XXPCK

NEMA

>

:2026-07-06



1500V, 500A, Beige (default)

	Panel Mounting, Screw Connection
	Panel Mounting
	Black (default)
	Screw Connection
(mm)	$51.00 * (P - 1) + 88.00$
(mm)	110
(mm)	65
( )	02P~05P
	Single level
	4~10
	PBT
	IIIa
UL 94	V0
	1000M at DC 500V
	COPPER ALLOY
	Ni PLATED

**-IEC**

(V)	1500
(A)	520
(III/3)(V)	1500
(III/3)(KV)	8
(mm <sup>2</sup> )	25
(mm <sup>2</sup> )	300
	M12
Philips	SW18
(N.m)	20
(N.m)	24
	The stripping length depends on the specification provided by the cable lug manufacturer
	NO
	NO

**-UL**

(UL/CUL Group E)(V)	1500
(UL/CUL Group E)(A)	420(FW2),500(FW1)
UL/CUL AWG	3
UL/CUL AWG	600(kcmil)

**&**

(YES or NO)	YES
가 (YES or NO)	NO
	125
	-40

**UL**

(Group E)(AWG)	3~600(kcmil)
(Group E)(V)	1500
(Group E)(A)	420(FW2),500(FW1)

**CUL**

(Group C)(AWG)	3~600(kcmil)
----------------	--------------

(Group C)(V)	1500
(Group C)(A)	420(FW2)

