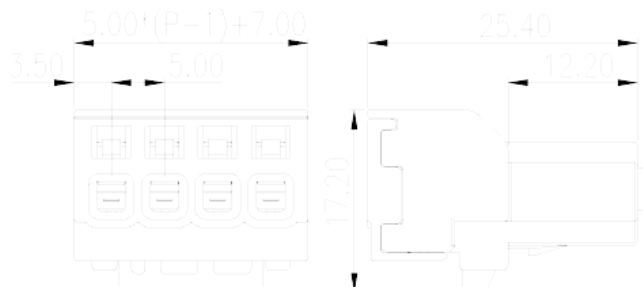
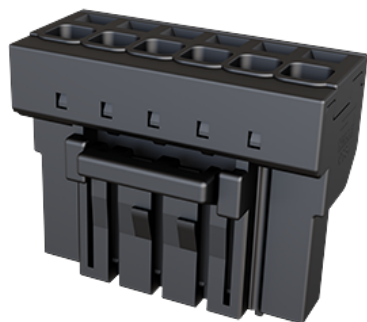


0234-20XX-MW

PCB > PCB -

:2026-07-06



Pitch : 5.00mm, 300V, 15.5A

	PCB Connector, Push-in Design
	PCB Connector – Plug
(mm)	5.00
	Spring Clamp Connection
	With lock flange
(mm)	$5.00 * (P - 1) + 7$
(mm)	17.2
(mm)	25.4
()	02P~14P
	Single level
	PBT
	a
UL 94	V0
	1000M at DC 500V
	HIGH PERFORMANCE COPPER ALLOY
	Au PLATED

-IEC

(V)	320
(A)	18
(II/2)(V)	320
(III/2)(V)	320
(III/3)(V)	200
(II/2)(KV)	4
(III/2)(KV)	4
(III/3)(KV)	4
(mm ²)	0.2
(mm ²)	2.5
(mm ²)	0.2
(mm ²)	2.5
(mm ²) , ,	0.25
(mm ²) , ,	1.5
(mm ²) , ,	0.25
(mm ²) , ,	1.5
2 (mm ²) , ,	0.5
2 (mm ²) , ,	1.5
Philips	0.4x2.5
	9~10

-UL

(UL/CUL Group B)(V)	300
(UL/CUL Group B)(A)	15.5
(UL/CUL Group D)(V)	300
(UL/CUL Group D)(A)	15.5
UL/CUL AWG	28
UL/CUL AWG	12
UL/CUL AWG	28
UL/CUL AWG	12

&

가 (YES or NO)	YES
	120
	-40

UL

(Group B)(AWG)	28~12
(Group B)(V)	300
(Group B)(A)	15.5
(Group D)(AWG)	28~12
(Group D)(V)	300
(Group D)(A)	15.5

CUL

(Group B)(AWG)	28~12
(Group B)(V)	300
(Group B)(A)	15.5
(Group D)(AWG)	28~12
(Group D)(V)	300
(Group D)(A)	15.5

