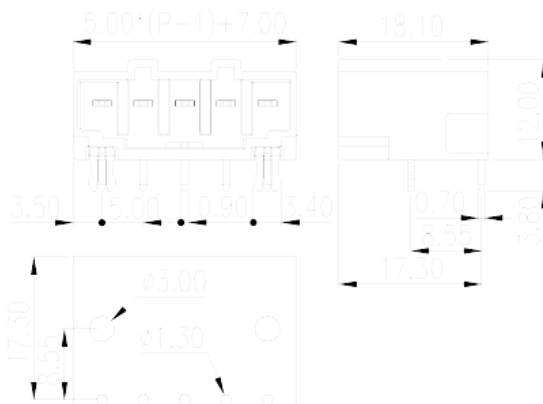
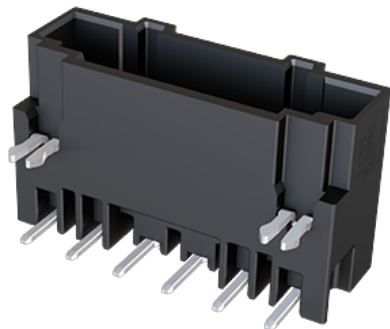


0234-26XX

PCB > PCB -

:2026-07-06



Pitch : 5.00mm, 300V, 15.5A

	PCB Connector
	PCB Connector – Socket
(mm)	5.00
	With lock flange
	Wave Soldering
(mm)	$5.00 \cdot (P-1) + 7$
(mm)	12
(mm)	18.1
(x) (mm)	0.7x0.9
()	02P~14P
	Single level

	PA
	I
UL 94	V0
	500M at DC 500V
	COPPER ALLOY



Au PLATED

-IEC

(V)	300
(A)	18
(II/2)(V)	320
(III/2)(V)	320
(III/3)(V)	200
(II/2)(KV)	4
(III/2)(KV)	4
(III/3)(KV)	4

-UL

(UL/CUL Group B)(V)	300
(UL/CUL Group B)(A)	15.5
(UL/CUL Group D)(V)	300
(UL/CUL Group D)(A)	15.5

&

가 (YES or NO)	YES
	120
	-40

UL

(Group B)(V)	300
(Group B)(A)	15.5
(Group D)(V)	300
(Group D)(A)	15.5

CUL

(Group B)(V)	300
(Group B)(A)	15.5
(Group D)(V)	300
(Group D)(A)	15.5

