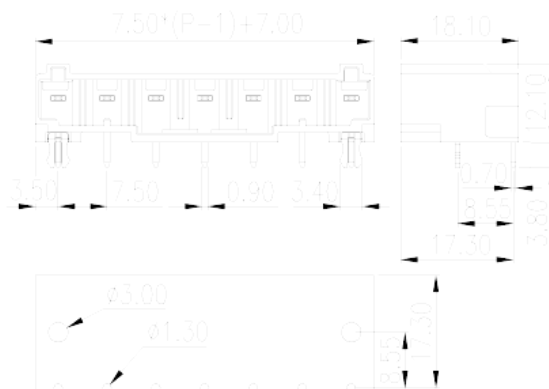
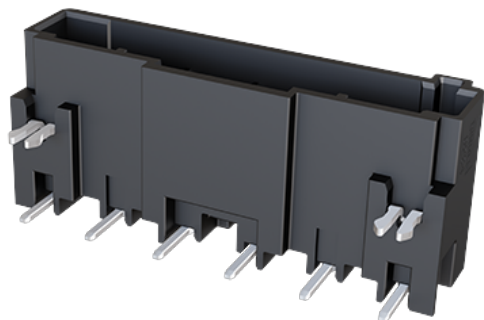


0234-36XX

PCB > PCB -

:2026-07-06



Pitch : 7.5mm, 300V, 16A

	PCB Connector
	PCB Connector – Socket
(mm)	7.50
	With threaded flange
	Wave Soldering
(mm)	$7.50*(P-1) + 7(P > 2) \& 18.50(P=2)$
(mm)	12
(mm)	18.1
(x) (mm)	0.7x0.9
PCB (mm)	1.3
()	02~12P
	Single level
	PA
	I
UL 94	V0
	500M at DC 500V



	COPPER ALLOY
	Au PLATED

-IEC

(V)	1000
(A)	18
(II/2)(V)	1000
(III/2)(V)	630
(III/3)(V)	500
(II/2)(KV)	6
(III/2)(KV)	6
(III/3)(KV)	6

-UL

(UL/CUL Group B)(V)	300
(UL/CUL Group B)(A)	16
(UL/CUL Group C)(V)	300
(UL/CUL Group C)(A)	16
(UL/CUL Group D)(V)	300
(UL/CUL Group D)(A)	5

&

가 (YES or NO)	YES
	120
	-40

UL

(Group B)(V)	300
(Group B)(A)	16
(Group C)(V)	300
(Group C)(A)	16
(Group D)(V)	600
(Group D)(A)	5

CUL

--	--

(Group B)(V)	300
(Group B)(A)	16
(Group C)(V)	300
(Group C)(A)	16
(Group D)(V)	600
(Group D)(A)	16

