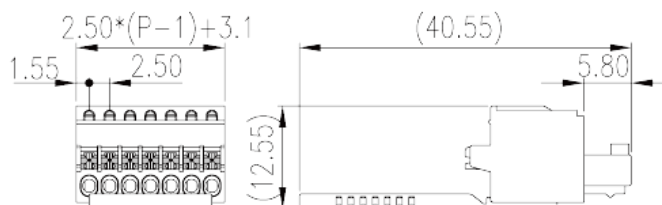
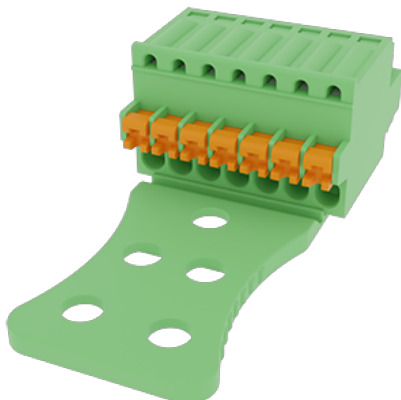


ESC250L-XXP

PCB > PCB -

:2026-07-06



Pitch: 2.50mm, 150V, 4A

	PCB Connector, Push-in Design
	PCB Connector – Plug
(mm)	2.50
	Push-in Design
	Without
(mm)	$2.50 * (P-1) + 3.1$
(mm)	12.55
(mm)	40.55
()	07P~24P
	Single level
	PA
	I
UL 94	V0
	500M at DC 500V
	COPPER ALLOY
	Tin PLATED

-IEC

(V)	320
(A)	4
(II/2)(V)	320
(III/2)(V)	160
(III/3)(V)	160
(II/2)(KV)	2.5
(III/2)(KV)	2.5
(III/3)(KV)	2.5
(mm ²)	0.2
(mm ²)	0.5
(mm ²)	0.2
(mm ²)	0.5
(mm ²) , ,	0.25
(mm ²) , ,	0.34
(mm ²) , ,	0.25
(mm ²) , ,	0.34
Philips	0.4x2.5
	8~9

-UL

(UL/CUL Group B)(V)	150
(UL/CUL Group B)(A)	4
(UL/CUL Group D)(V)	150
(UL/CUL Group D)(A)	4
UL/CUL AWG	28
UL/CUL AWG	20
UL/CUL AWG	28
UL/CUL AWG	20

&

가 (YES or NO)	YES
---------------	-----

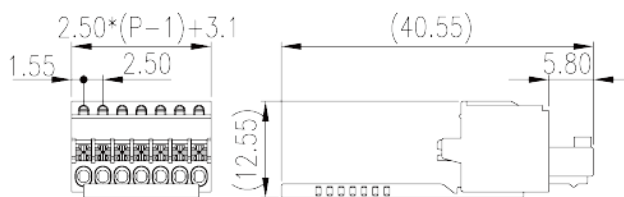
	80
	-40

UL

(Group B)(AWG)	28~20
(Group B)(V)	150
(Group B)(A)	4
(Group D)(AWG)	28~20
(Group D)(V)	150
(Group D)(A)	4

CUL

(Group B)(AWG)	28~20
(Group B)(V)	150
(Group B)(A)	4
(Group D)(AWG)	28~20
(Group D)(V)	150
(Group D)(A)	4





Delight Through Connections