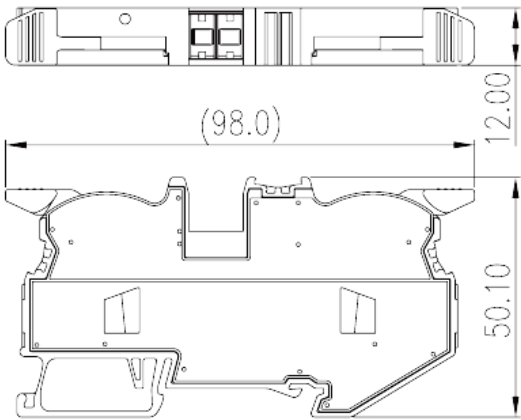
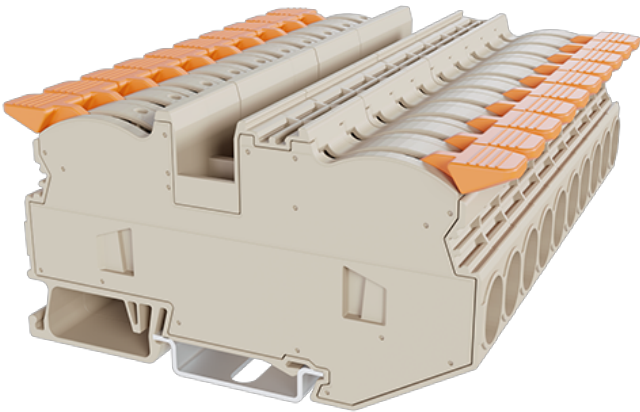


DPH16

DIN

>

:2026-02-09



600V, 75A, Beige (default)

	Single Level Feed-through Terminal Block, Push-in Design
	Single Level Feed-through Terminal Block
	Refer to drawing
	Push-in Design
(mm)	98
(mm)	12
(mm)	51.6 (TS-35N) / 59.1 (TS-35/15N)
	Single level
	2
	PA
	I
UL 94	V0
	500M at DC 500V
	COPPER ALLOY
	Tin PLATED

-IEC

(V)	1000
(A)	76
(III/3)(V)	1000
(III/3)(KV)	8
(mm ²)	0.5
(mm ²)	25
(mm ²)	0.5
(mm ²)	16
(mm ²) , ,	0.5
(mm ²) , ,	16
(mm ²) , ,	0.5
(mm ²) , ,	16
² (mm ²) , ,	1.5
² (mm ²) , ,	4
Width)(mm) (Blade thickness x	1.0x5.5
	18~20
	TS-35N、TS-35/15N
	NO
	NO

-UL

(UL/CUL Group B)(V)	600
(UL/CUL Group B)(A)	75
(UL/CUL Group C)(V)	600
(UL/CUL Group C)(A)	75
UL/CUL AWG	20
UL/CUL AWG	4
UL/CUL AWG	20
UL/CUL AWG	4

&

(YES or NO)	YES
가 (YES or NO)	YES
	120
	-40

