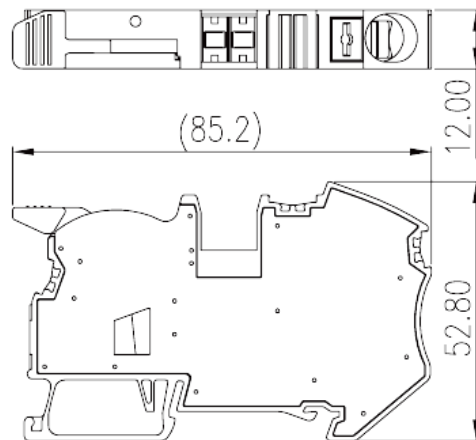
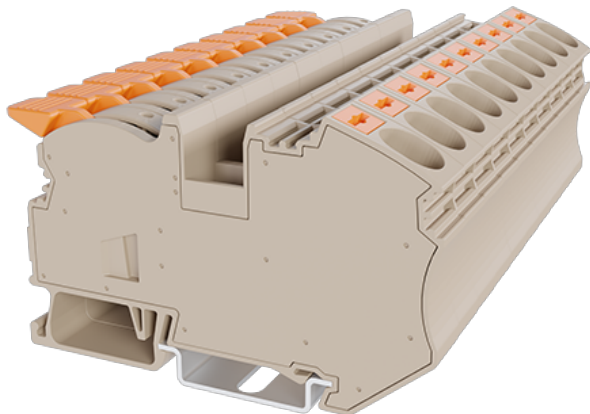


DPH16-DP

DIN

>

:2026-07-05



600V, 75A, Beige (default)

	Single Level Feed-through Terminal Block, Push-in Design
	Single Level Feed-through Terminal Block
	Refer to drawing
	Push-in Design
	Rail Mounting
(mm)	85.2
(mm)	12
(mm)	54.3 (TS-35N) /61.8 (TS-35/15N)
()	1P
	Single level
	2
	PA
	I
UL 94	V0
	500M at DC 500V

-IEC

(V)		1000
(A)		76
(III/3)(V)		1000
(III/3)(KV)		8
(mm ²)		0.5
(mm ²)		25
(mm ²)		0.5
(mm ²)		16
(mm ²)	,	0.5
(mm ²)	,	16
(mm ²)	,	0.5
(mm ²)	,	16
² (mm ²)	,	1.5
² (mm ²)	,	4
Width)(mm)	(Blade thickness x	1x5.5
		18~20
		TS-35N、TS-35/15N
		NO
		NO

-UL

(UL/CUL Group B)(V)		600
(UL/CUL Group B)(A)		75
(UL/CUL Group C)(V)		600
(UL/CUL Group C)(A)		75
(UL/CUL Group D)(V)		600
(UL/CUL Group D)(A)		5
UL/CUL	AWG	20
UL/CUL	AWG	4
UL/CUL	AWG	20



UL/CUL	AWG	4
&		
	(YES or NO)	YES
가	(YES or NO)	YES
		120
		-40

UL

	(Group B)(AWG)	20~4
	(Group B)(V)	600
	(Group B)(A)	75
	(Group C)(AWG)	20~4
	(Group C)(V)	600
	(Group C)(A)	75
	(Group D)(AWG)	20~4
	(Group D)(V)	600
	(Group D)(A)	5

CUL

	(Group B)(AWG)	20~4
	(Group B)(V)	600
	(Group B)(A)	75
	(Group C)(AWG)	20~4
	(Group C)(V)	600
	(Group C)(A)	75
	(Group D)(AWG)	20~4
	(Group D)(V)	600
	(Group D)(A)	5

--	--	--

