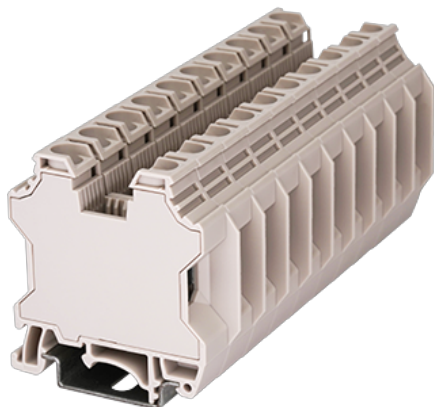


DK16T

DIN

>

:2026-07-05



M5, 1000V, 100A, Beige (default)

	Single Level Feed-through Terminal Block
	Single Level Feed-through Terminal Block
	Beige (default)
	Screw Connection
	Rail mounting
(mm)	54.3
(mm)	12
(mm)	54.8
()	1P
	Single level
	2
	PA
	I
UL 94	V0
	500M at DC 500V
	Tin PLATED

-IEC

(V)		1000
(A)		100
(III/3)(V)		1000
(II/2)(KV)		8
(III/2)(KV)		8
(III/3)(KV)		8
(mm ²)		1.5
(mm ²)		25
(mm ²)		1.5
(mm ²)		16
(mm ²)	,	1.5
(mm ²)	,	16
(mm ²)	,	1.5
(mm ²)	,	16
2	(mm ²)	1.5
2	(mm ²)	6
2	(mm ²)	1.5
2	(mm ²)	6
(mm ²) 2	,	1.5
(mm ²) 2	,	6
2	(mm ²)	1.5
2	(mm ²)	10
		M5
Width)(mm)	(Blade thickness x	1.0x5.5
	(N.m)	2.5
	(N.m)	3.4
		14~16
		TS-35N/TS-35/15N
		YES



	NO
--	----

-UL

(UL/CUL Group B)(V)	1000
(UL/CUL Group B)(A)	100
(UL/CUL Group C)(V)	1000
(UL/CUL Group C)(A)	100
UL/CUL AWG	14
UL/CUL AWG	3
UL/CUL AWG	14
UL/CUL AWG	3

&

(YES or NO)	YES
가 (YES or NO)	YES
	120
	-40

UL

(Group E)(AWG)	14~3
(Group E)(V)	1000
(Group E)(A)	100

CUL

(Group C)(AWG)	14~3
(Group C)(V)	1000
(Group C)(A)	100

--	--

