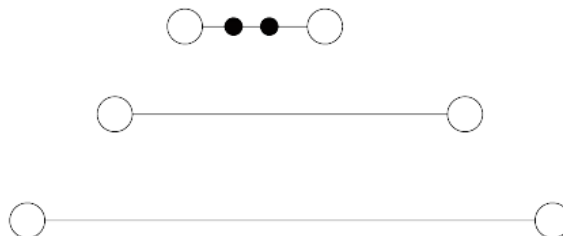
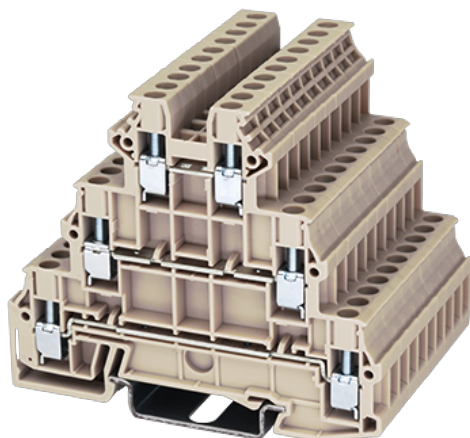


DK2.5L-3L

DIN

>

:2026-05-14



M2.5, 300V, 20A, Beige (default)

	Three level Feed-Through Terminal Block
	Three level Feed-Through Terminal Block
	Beige (default)
	Screw Connection
	Rail mounting
(mm)	72.8
(mm)	5.1
(mm)	62.7
()	1P
	Three level
	6
	PA
	I
UL 94	V0
	500M at DC 500V
	Tin PLATED

-IEC

(V)	500
(A)	24
(III/3)(V)	500
(II/2)(KV)	8
(III/2)(KV)	8
(III/3)(KV)	8
(mm ²)	0.34
(mm ²)	4
(mm ²)	0.34
(mm ²)	2.5
(mm ²) , ,	0.5
(mm ²) , ,	2.5
(mm ²) , ,	0.5
(mm ²) , ,	2.5
2 (mm ²)	0.34
2 (mm ²)	1.5
2 (mm ²)	0.5
2 (mm ²)	1.5
(mm ²) 2 , ,	0.5
(mm ²) 2 , ,	1.5
2 (mm ²) , ,	0.5
2 (mm ²) , ,	1.5
	M2.5
Width)(mm) (Blade thickness x	0.6x3.5
Philips	PH1
(N.m)	0.4
(N.m)	0.5
	9~11
	TS-35N/TS-35/15N

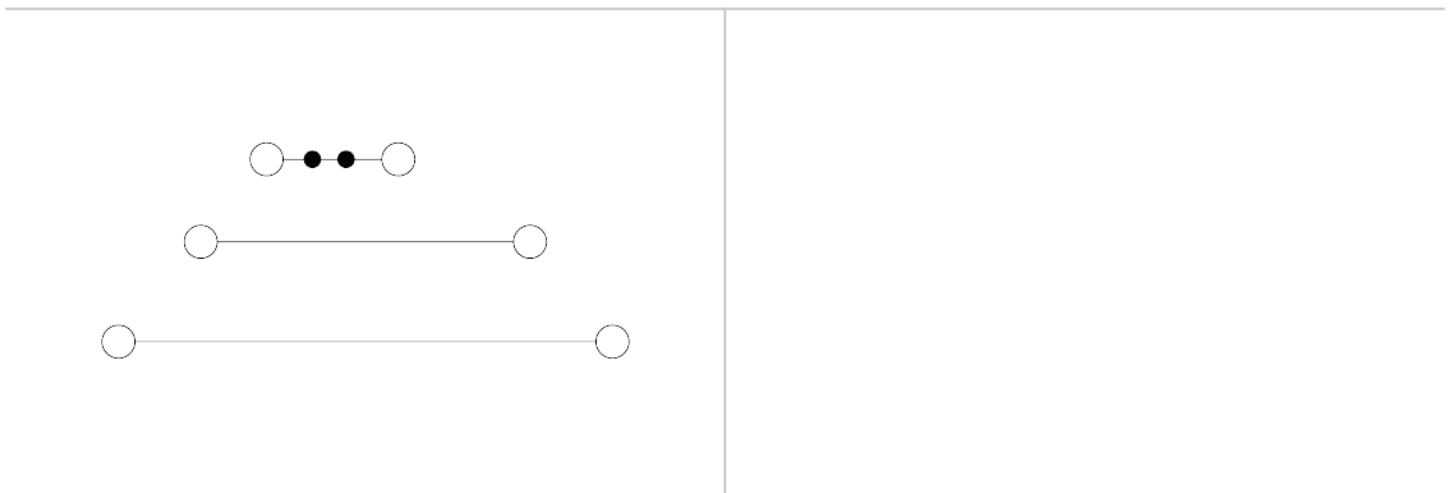
	YES
	NO

-UL

(UL/CUL Group B)(V)		300
(UL/CUL Group B)(A)		20
(UL/CUL Group C)(V)		300
(UL/CUL Group C)(A)		20
(UL/CUL Group D)(V)		600
(UL/CUL Group D)(A)		5
UL/CUL	AWG	22
UL/CUL	AWG	12
UL/CUL	AWG	22
UL/CUL	AWG	12

&

(YES or NO)	YES
가 (YES or NO)	YES
	120
	-40





Delight Through Connections

