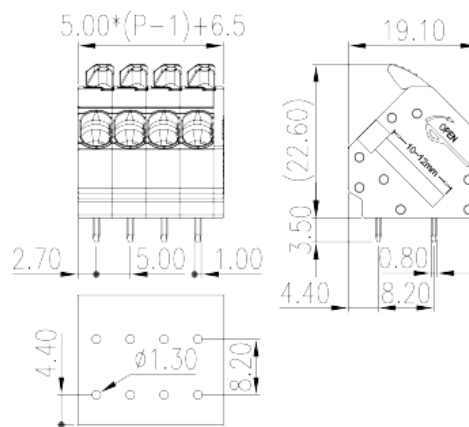
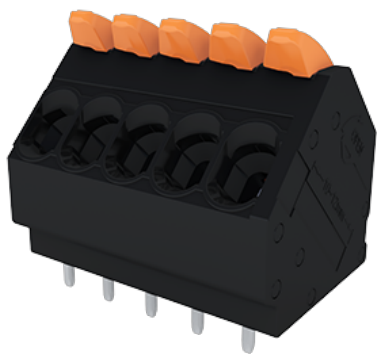


0275-21XX

PCB > PCB

:2026-05-14



Pitch :5.00mm, 320V, 20A

		PCB Terminal Blocks, Push-in Design
		PCB Terminal Blocks
(mm)		5
		Black (default)
		Push-in Design
		Without
		Wave Soldering
(mm)		$5.00 \times (P-1) + 6.5$
(mm)		19.1
(mm)		22.6
() x () (mm)		0.8x1
PCB (mm)		1.3
()		02P~12P
		Single level
		2~12
		PA



	I
UL 94	V0
	500M at DC 500V
	COPPER ALLOY
	Tin PLATED

-IEC

(V)	400
(A)	32
(II/2)(V)	630
(III/2)(V)	400
(III/3)(V)	320
(II/2)(KV)	4
(III/2)(KV)	4
(III/3)(KV)	4
(mm ²)	0.2
(mm ²)	4
(mm ²)	0.2
(mm ²)	4
(mm ²) , ,	0.25
(mm ²) , ,	2.5
(mm ²) , ,	0.25
(mm ²) , ,	2.5
² (mm ²) , ,	0.5
² (mm ²) , ,	1.5
	10~12

-UL

(UL/CUL Group B)(V)	300
(UL/CUL Group B)(A)	20
(UL/CUL Group D)(V)	300
(UL/CUL Group D)(A)	10



UL/CUL	AWG	24
UL/CUL	AWG	12
UL/CUL	AWG	24
UL/CUL	AWG	12

&

가	(YES or NO)	YES
		120
		-40

UL

(Group B)(AWG)	24~12
(Group B)(V)	300
(Group B)(A)	20
(Group D)(AWG)	24~12
(Group D)(V)	300
(Group D)(A)	10

CUL

(Group B)(AWG)	24~12
(Group B)(V)	300
(Group B)(A)	20
(Group D)(AWG)	24~12
(Group D)(V)	300
(Group D)(A)	10

--	--

