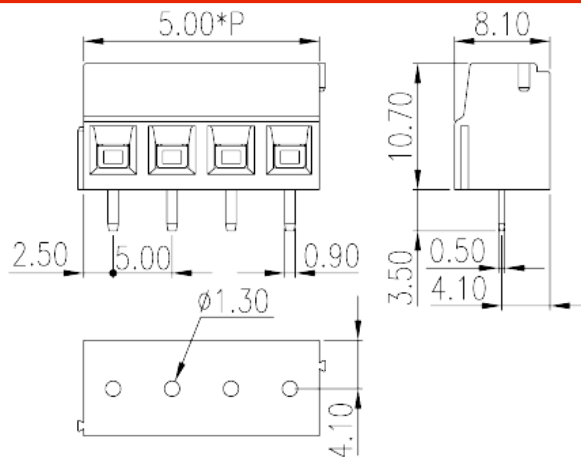
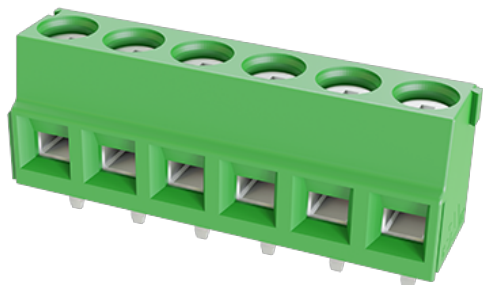


ELK500B-XXP

PCB > PCB

:2026-07-05



Pitch :5.00mm, M3, 300V, 13.5A

		PCB Terminal Blocks, Screw Connection
		PCB Terminal Blocks
(mm)		5
		Green (default)
		Screw Connection
		Without
		Wave Soldering
(mm)		5.00*P
(mm)		8.1
(mm)		10.7
() x () (mm)		0.5x0.9
PCB (mm)		1.3
()		02P~24P
		Single level
		2~24
		PA



	I
UL 94	V0
	500M at DC 500V
	COPPER ALLOY
	Tin PLATED

-IEC

(V)	320
(A)	14
(II/2)(V)	630
(III/2)(V)	320
(III/3)(V)	250
(II/2)(KV)	4
(III/2)(KV)	4
(III/3)(KV)	4
(mm ²)	0.2
(mm ²)	1.5
(mm ²)	0.2
(mm ²)	1.5
(mm ²) , ,	0.25
(mm ²) , ,	1
(mm ²) , ,	0.25
(mm ²) , ,	1
2 (mm ²)	0.2
2 (mm ²)	0.75
2 (mm ²)	0.2
2 (mm ²)	0.75
(mm ²) 2 , ,	0.25
(mm ²) 2 , ,	0.5
2 (mm ²) , ,	0.5
2 (mm ²) , ,	0.75



		M3
Width) (mm)	(Blade thickness x	0.6x3.5
Philips		PH1
	(N.m)	0.5
	(N.m)	0.6
		6~7

-UL

	(UL/CUL Group B)(V)	300
	(UL/CUL Group B)(A)	13.5
	(UL/CUL Group D)(V)	300
	(UL/CUL Group D)(A)	10
UL/CUL	AWG	26
UL/CUL	AWG	16
UL/CUL	AWG	26
UL/CUL	AWG	16

&

가	(YES or NO)	YES
		120
		-40

UL

	(Group B)(AWG)	26~16
	(Group B)(V)	300
	(Group B)(A)	13.5
	(Group D)(AWG)	26~16
	(Group D)(V)	300
	(Group D)(A)	10

CUL

	(Group B)(AWG)	26~16
	(Group B)(V)	300
	(Group B)(A)	13.5

(Group D)(AWG)	26~16
(Group D)(V)	300
(Group D)(A)	10

