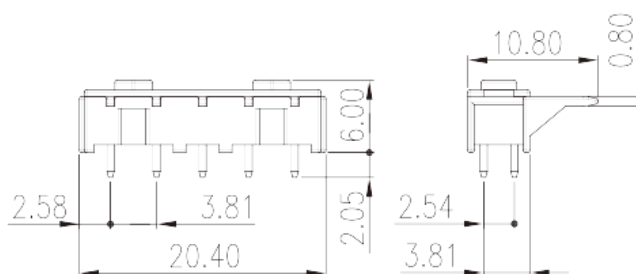
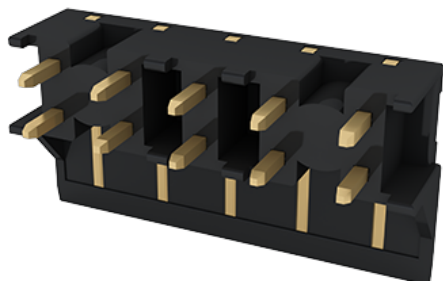


BST-220-05

PCB > PCB

:2026-07-05



Pitch :3.81mm, 150V AC/DC, 8A

	Rail Connector
	Rail Connector
(mm)	3.81
	Black (default)
	Without
	Reflow Soldering (245)
(mm)	20.4
(mm)	6
(mm)	10.8
(x) (mm)	0.6x0.6
PCB (mm)	0.9
()	05P
	Single level
	5
	HIGH-TEMPERATURE PLASTICS
	IIIa



UL 94	V0
	500M at DC 500V
	COPPER ALLOY
	Au PLATED
MSL	1

-IEC

(V)	320
(A)	12
(II/2)(V)	320
(III/2)(V)	160
(III/3)(V)	160
(II/2)(KV)	2.5
(III/2)(KV)	2.5
(III/3)(KV)	2.5

-UL

(UL/CUL Group B)(V)	150
(UL/CUL Group B)(A)	8

&

가 (YES or NO)	YES
	120
	-40

UL

(Group B)(V)	150
(Group B)(A)	8

CUL

(Group B)(V)	150
(Group B)(A)	5

