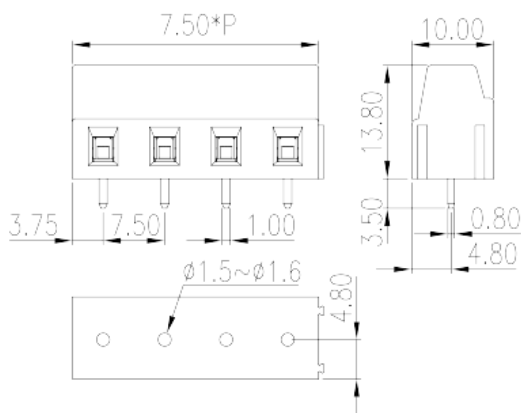
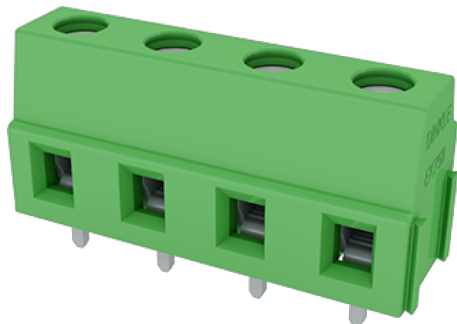


EK750V-XXP

PCB > PCB

:2026-07-05



Pitch :7.50mm, M2.5, 300V, 20A

	PCB Terminal Blocks, Screw Connection
	PCB Terminal Blocks
(mm)	7.5
	Green (default)
	Screw Connection
	Without
	Wave Soldering
(mm)	$7.50 \times P$
(mm)	10
(mm)	13.8
(x) (mm)	0.8x1
PCB (mm)	1.5~1.6
()	02P~16P
	Single level
	2~16
	PA



	I
UL 94	V0
	500M at DC 500V
	COPPER ALLOY
	Tin PLATED

-IEC

(V)	320
(A)	24
(II/2)(V)	630
(III/2)(V)	320
(III/3)(V)	250
(II/2)(KV)	4
(III/2)(KV)	4
(III/3)(KV)	4
(mm ²)	0.2
(mm ²)	2.2
(mm ²)	0.2
(mm ²)	2.5
(mm ²) , ,	0.25
(mm ²) , ,	1.5
(mm ²) , ,	0.25
(mm ²) , ,	1.5
2 (mm ²)	0.2
2 (mm ²)	1
2 (mm ²)	0.2
2 (mm ²)	1
(mm ²) 2 , ,	0.25
(mm ²) 2 , ,	0.75
2 (mm ²) , ,	0.5
2 (mm ²) , ,	1



		M2.5
Width)(mm)	(Blade thickness x	0.6x3.5
	(N.m)	0.4
	(N.m)	0.5
		6~7

-UL

(UL/CUL Group B)(V)		300
(UL/CUL Group B)(A)		20
(UL/CUL Group D)(V)		300
(UL/CUL Group D)(A)		10
UL/CUL	AWG	28
UL/CUL	AWG	12
UL/CUL	AWG	28
UL/CUL	AWG	12

&

가	(YES or NO)	YES
		120
		-40

UL

(Group B)(AWG)		28~12
(Group B)(V)		300
(Group B)(A)		20
(Group D)(AWG)		28~12
(Group D)(V)		300
(Group D)(A)		10

CUL

(Group B)(AWG)		28~12
(Group B)(V)		300
(Group B)(A)		20
(Group D)(AWG)		28~12

(Group D) (V)	300
(Group D) (A)	10

