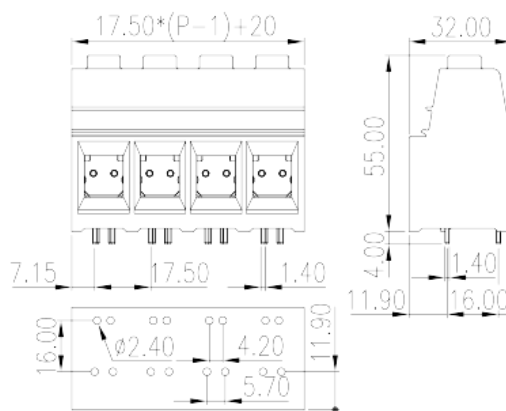
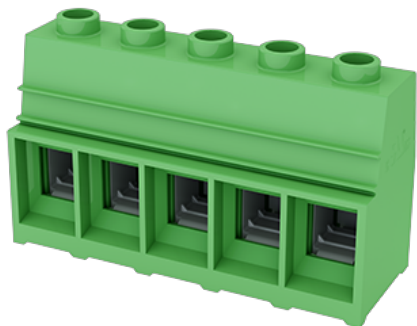


ESK175V-XXP

PCB > PCB

:2026-07-05



Pitch :17.50mm, M6, 600V, 160A

PCB Terminal Blocks , Screw Connection	
PCB Terminal Blocks	
(mm)	17.5
	Green (default)
	Screw Connection
	Without
	Wave Soldering
(mm)	$17.50 \times (P-1) + 20$
(mm)	32
(mm)	55
(x) (mm)	1.4 x 1.4
PCB (mm)	2.4
()	01P~13P
	Single level
	1~13
	PA



	I
UL 94	V0
	500M at DC 500V
	COPPER ALLOY
	Tin PLATED

-IEC

(V)	1000
(A)	192
(II/2)(V)	1000
(III/2)(V)	1000
(III/3)(V)	1000
(II/2)(KV)	6
(III/2)(KV)	8
(III/3)(KV)	8
(mm ²)	1.5
(mm ²)	70
(mm ²)	1.5
(mm ²)	70
(mm ²) , ,	1.5
(mm ²) , ,	50
(mm ²) , ,	1.5
(mm ²) , ,	50
2 (mm ²)	1.5
2 (mm ²)	16
2 (mm ²)	1.5
2 (mm ²)	25
(mm ²) 2 , ,	1.5
(mm ²) 2 , ,	16
2 (mm ²) , ,	1.5
2 (mm ²) , ,	16



	M6
(N.m)	5
(N.m)	6
	19~21

-UL

(UL/CUL Group B)(V)	600
(UL/CUL Group B)(A)	160
(UL/CUL Group C)(V)	600
(UL/CUL Group C)(A)	160
(UL/CUL Group D)(V)	600
(UL/CUL Group D)(A)	5
UL/CUL AWG	16
UL/CUL AWG	2/0
UL/CUL AWG	16
UL/CUL AWG	2/0

&

가 (YES or NO)	YES
	120
	-40

UL

(Group B)(AWG)	16~2/0
(Group B)(V)	600
(Group B)(A)	160
(Group C)(AWG)	16~2/0
(Group C)(V)	600
(Group C)(A)	160
(Group D)(AWG)	16~2/0
(Group D)(V)	600
(Group D)(A)	5

CUL

(Group B)(AWG)	16~2/0
----------------	--------

(Group B)(V)	600
(Group B)(A)	160
(Group C)(AWG)	16~2/0
(Group C)(V)	600
(Group C)(A)	160
(Group D)(AWG)	16~2/0
(Group D)(V)	600
(Group D)(A)	5

