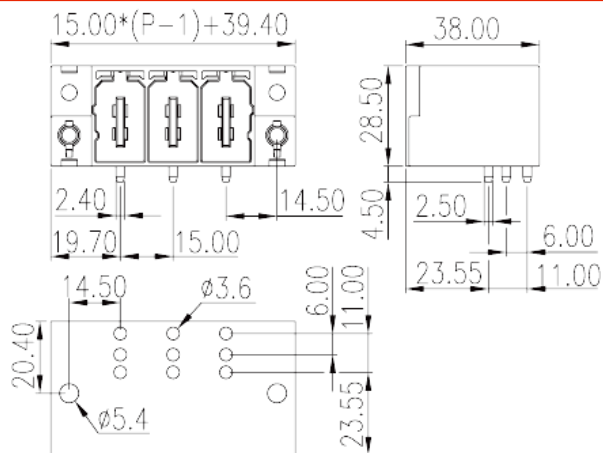
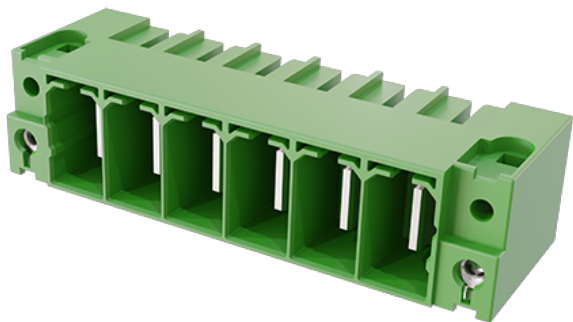


# ECH150RM-XXP

PCB > PCB -

:2026-04-02



Pitch :15.00mm, 600V, 115A

	PCB Connector – Socket, Wave soldering
	PCB Connector – Socket
(mm)	15
	Green (default)
	With threaded flange
	Wave Soldering
(mm)	$15.00 * (P-1) + 39.4$
(mm)	38
(mm)	28.5
(    x    ) (mm)	2.4x2.5
PCB      (mm)	3.6
(    )	02P~08P
	Single level
	2~8
	PBT
	IIIa



UL 94	V0
	500M at DC 500V
	COPPER ALLOY
	Ag PLATED

**-IEC**

(V)	1000
(A)	125
(II/2)(V)	1000
(III/2)(V)	1000
(III/3)(V)	1000
(II/2)(KV)	8
(III/2)(KV)	8
(III/3)(KV)	8
(N.m)	0.6

**-UL**

(UL/CUL Group B)(V)	600
(UL/CUL Group B)(A)	115
(UL/CUL Group C)(V)	600
(UL/CUL Group C)(A)	115
(UL/CUL Group D)(V)	600
(UL/CUL Group D)(A)	5

**&**

가 (YES or NO)	YES
	120
	-40

**UL**

(Group B)(V)	600
(Group B)(A)	115
(Group C)(V)	600
(Group C)(A)	115
(Group D)(V)	600

(Group D)(A)

5

**CUL**

(Group B)(V)	600
(Group B)(A)	115
(Group C)(V)	600
(Group C)(A)	115
(Group D)(V)	600
(Group D)(A)	5

