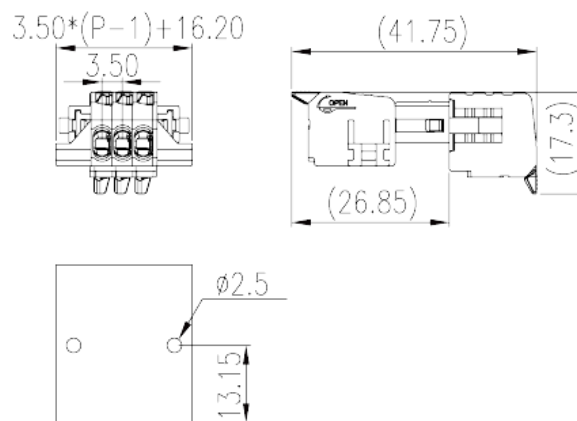
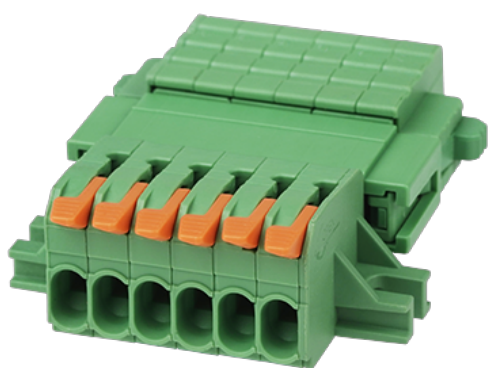


0218-27XXM025

6-33

PCB > PCB -

:2026-04-02



Pitch : 3.50 mm, 300V, 8A

	Pluggable terminal block, Push-in Design
	Terminal Block
(mm)	3.5
	Green (default)
	Push-in Design
	With lock flange
(mm)	$3.50 * (P - 1) + 16.2$
(mm)	41.75
(mm)	17.3
()	02P~24P
	Single level
	2~24
	PA
	I

UL 94	V0
	500M at DC 500V
	COPPER ALLOY
	Tin PLATED

-IEC

(V)	320
(A)	10
(II/2)(V)	320
(III/2)(V)	160
(III/3)(V)	160
(II/2)(KV)	2.5
(III/2)(KV)	2.5
(III/3)(KV)	2.5
(mm ²)	0.14
(mm ²)	1.5
(mm ²)	0.14
(mm ²)	1.5
(mm ²) , ,	0.25
(mm ²) , ,	1.5
(mm ²) , ,	0.25
(mm ²) , ,	0.75
² (mm ²) , ,	0.5
² (mm ²) , ,	0.5
(N.m)	0.1
	9~10

-UL

(UL/CUL Group B)(V)	300
(UL/CUL Group B)(A)	8
(UL/CUL Group D)(V)	300
(UL/CUL Group D)(A)	8

UL/CUL	AWG	28
UL/CUL	AWG	16
UL/CUL	AWG	28
UL/CUL	AWG	16

&

가	(YES or NO)	YES
		120
		-40

