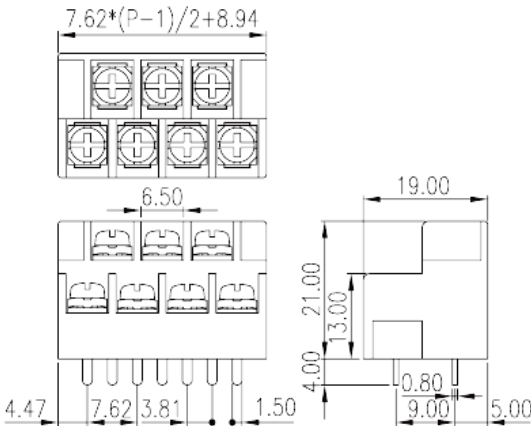
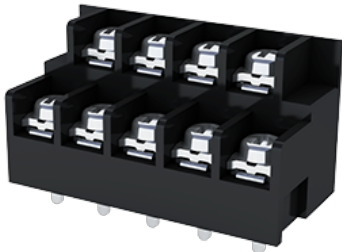


0032-23XX

>

:2026-02-09



Pitch: 7.62mm, M3, 300V, 20A

	Bi-level, Screw Connection
	Bi-level
(mm)	7.62
	Black (default)
	Screw connection
	Without
	Wave Soldering
(mm)	$7.62 \times (P-1) / 2 + 8.94$
(mm)	19
(mm)	21
(x) (mm)	0.8x1.5
PCB (mm)	2.2
()	03P~23P
	Bi-level
	3~23
	PBT

	IIIa
UL 94	V0
	1000M at DC 500V
	COPPER ALLOY
	Tin PLATED

-IEC

(V)	320
(A)	24
(II/2)(V)	320
(III/2)(V)	320
(III/3)(V)	200
(II/2)(KV)	4
(III/2)(KV)	4
(III/3)(KV)	4
(mm ²)	0.34
(mm ²)	2.5
(mm ²)	0.34
(mm ²)	2.5
2 (mm ²)	0.34
2 (mm ²)	2.5
2 (mm ²)	0.34
2 (mm ²)	2.5
	M3
Width)(mm) (Blade thickness x	0.8x4
Philips	PH2
(N.m)	0.5
(N.m)	0.6
	8~9

-UL

(UL/CUL Group B)(V)	300
(UL/CUL Group B)(A)	20
(UL/CUL Group D)(V)	300

(UL/CUL Group D)(A)		10
UL/CUL	AWG	22
UL/CUL	AWG	12
UL/CUL	AWG	22
UL/CUL	AWG	12

&

(YES or NO)		YES
		120
		-40

