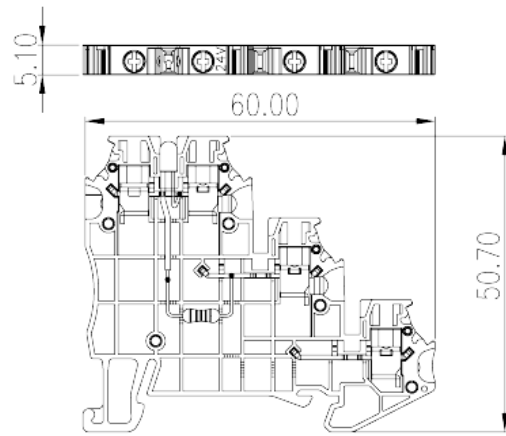
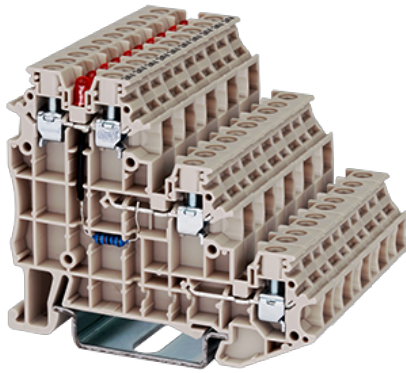


DK1.5SG-L24

DIN

>

:2026-07-05



M2.5, 24V, 15A, Beige (default)

	Component terminal block, Screw Connection
	Component terminal block
	Beige (default)
	Screw Connection
(mm)	60.4
(mm)	5.1
(mm)	50.7
()	1P
	Three level
	4
	PA
	I
UL 94	V0
	500M at DC 500V

-IEC

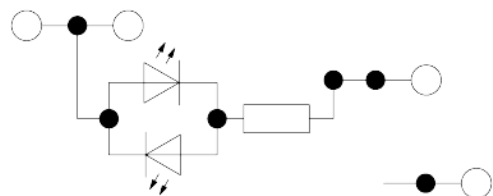
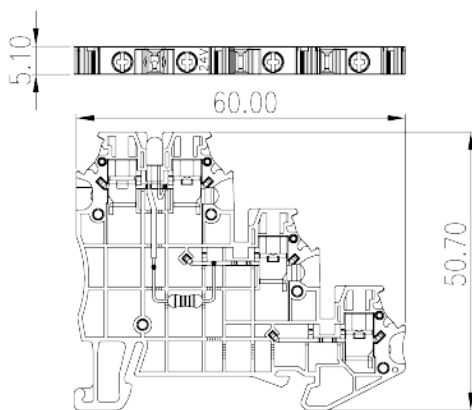
(V)		24
(A)		17.5
(III/3)(V)		24
(III/3)(KV)		4
(mm ²)		0.2
(mm ²)		2.5
(mm ²)		0.2
(mm ²)		2.5
(mm ²)	,	0.25
(mm ²)	,	2.5
(mm ²)	,	0.25
(mm ²)	,	2.5
2	(mm ²)	0.2
2	(mm ²)	1
2	(mm ²)	0.2
2	(mm ²)	0.75
(mm ²)	2 ,	0.5
(mm ²)	2 ,	1
(mm ²)	2 ,	0.5
(mm ²)	2 ,	1
		M2.5
Width)(mm)	(Blade thickness x	0.6x3.5
Philips		0.6x3.5, PH1
(N.m)		0.4
(N.m)		0.45
		8~9
		TS-35
		YES
		NO

-UL

(UL/CUL Group B)(V)		24
(UL/CUL Group B)(A)		15
(UL/CUL Group C)(V)		24
(UL/CUL Group C)(A)		15
(UL/CUL Group D)(V)		24
(UL/CUL Group D)(A)		15
(UL/CUL Group E)(V)		24
(UL/CUL Group E)(A)		15
UL/CUL	AWG	24
UL/CUL	AWG	14
UL/CUL	AWG	24
UL/CUL	AWG	14

&

(YES or NO)		YES
가 (YES or NO)		YES
		120
		-40





Delight Through Connections