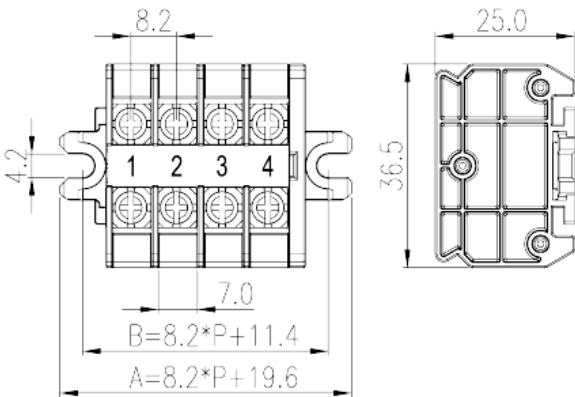


# DKB20N-XXPK

NEMA

>

:2026-02-09



Pitch : 8.20mm, M3.5, 600V, 20/30A

	Panel Mounting, Screw Connection
	Panel Mounting
(mm)	8.2
	Refer to drawing
	Screw Connection
(mm)	$8.20 \times P + 19.6$
(mm)	36.5
(mm)	25
( )	01P~20P
	Single level
	2~40
	PC
	a
UL 94	V2
	1000M at DC 500V
	COPPER ALLOY

		Tin PLATED
<b>-IEC</b>		
(V)		630
(A)		24
(III/3)(V)		630
(III/3)(KV)		8
(mm <sup>2</sup> )		0.2
(mm <sup>2</sup> )		2.5
(mm <sup>2</sup> )		0.2
(mm <sup>2</sup> )		2.5
2	(mm <sup>2</sup> )	2.5
2	(mm <sup>2</sup> )	2.5
		M3.5
Philips		PH2
(N.m)		0.8~1
(N.m)		0.8
(N.m)		1
(N.m)		0.8
	9~10The stripping length depends on the specification provided by the cablelug manufacturer	
	TS-35N、TS-35/15N	
	YES	
	NO	

<b>-UL</b>		
(UL/CUL Group B)(V)		600
(UL/CUL Group B)(A)		20
(UL/CUL Group C)(V)		600
(UL/CUL Group C)(A)		20
(UL/CUL Group D)(V)		600
(UL/CUL Group D)(A)		20
UL/CUL	AWG	26
UL/CUL	AWG	12
UL/CUL	AWG	26



UL/CUL	AWG	12
&		
(YES or NO)		YES
가 (YES or NO)		NO
		125
		-40

## UL

(Group B) (AWG)	26-12/(2)26-(2)14
(Group B) (V)	600
(Group B) (A)	20/30
(Group C) (AWG)	26-12/(2)26-(2)14
(Group C) (V)	600
(Group C) (A)	20/30
(Group D) (AWG)	26-12/(2)26-(2)14
(Group D) (V)	600
(Group D) (A)	5

## CUL

(Group B) (AWG)	26-12/(2)26-(2)14
(Group B) (V)	600
(Group B) (A)	20/30
(Group C) (AWG)	26-12/(2)26-(2)14
(Group C) (V)	600
(Group C) (A)	20/30
(Group D) (AWG)	26-12/(2)26-(2)14
(Group D) (V)	600
(Group D) (A)	5

--	--

